

## Phospho-DEPTOR(Ser244) Ab

Cat.#: AF4313

Size: 50ul,100ul,200ul

Concn.: 1mg/ml

Source: Rabbit

Mol.Wt.: 48kDa

Clonality: Polyclonal

Application: WB 1:500-1:2000

Reactivity: Human, Mouse, Rat

Purification: The Ab is from purified rabbit serum by affinity purification via sequential chromatography on phospho- and non-phospho-peptide affinity columns.

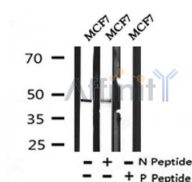
Specificity: Phospho-DEPTOR(Ser244) Ab detects endogenous levels of DEPTOR only when phosphorylated at Ser244.

Immunogen: A synthesized peptide derived from human DEPTOR around the phosphorylation site of Ser244.

Uniprot: Q8TB45

Tissue Specificity: Expression is negatively regulated by both mTORC1 and mTORC2 (at protein level).

Storage Condition and Buffer: Rabbit IgG in phosphate buffered saline , pH 7.4, 150mM NaCl, 0.02% sodium azide and 50% glycerol. Store at -20 °C. Stable for 12 months from date of receipt.



**IMPORTANT:** For western blot, incubate membrane with diluted primary Ab in 5% w/v milk , 1X TBS, 0.1% Tween@20 at 4°C with gentle shaking, overnight.

For Research Use Only. Not for use in diagnostic and therapeutic procedures. Not for resale without express authorization.