

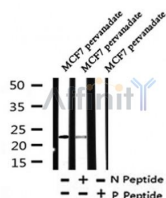
Phospho-Claudin 5 (Thr207) Ab

Cat.#: AF4307
Size: 50ul,100ul,200ul

Concn.: 1mg/ml
Source: Rabbit

Mol.Wt.: 23kDa
Clonality: Polyclonal

Application:	WB 1:500-1:2000
Reactivity:	Human,Mouse,Rat
Purification:	The Ab is from purified rabbit serum by affinity purification via sequential chromatography on phospho- and non-phospho-peptide affinity columns.
Specificity:	Phospho-Claudin 5 (Thr207) Ab detects endogenous levels of Claudin 5 only when phosphorylated at Thr207 .
Immunogen:	A synthesized peptide derived from human Claudin 5 around the phosphorylation site of Thr207 .
Uniprot:	O00501
Subcellular Location:	Cell junction > tight junction. Cell membrane.
Similarity:	Belongs to the claudin family.
Storage Condition and Buffer:	Rabbit IgG in phosphate buffered saline , pH 7.4, 150mM NaCl, 0.02% sodium azide and 50% glycerol.Store at -20 °C.Stable for 12 months from date of receipt.



Western blot analysis of Phospho-Claudin 5 (Thr207) in lysates of MCF7 pervanadate, using Phospho-Claudin 5 (Thr207) Ab(AF4307).

IMPORTANT: For western blot, incubate membrane with diluted primary Ab in 5% w/v milk , 1X TBS, 0.1% Tween@20 at 4°C with gentle shaking, overnight.

For Research Use Only. Not for use in diagnostic and therapeutic procedures. Not for resale without express authorization.