

---

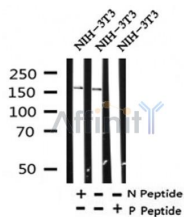
## Phospho-ROCK1(Ser282) Ab

Cat.#: AF4304  
Size: 50ul,100ul,200ul

Concn.: 1mg/ml  
Source: Rabbit

Mol.Wt.: 160kDa  
Clonality: Polyclonal

Application:	WB 1:500-1:2000
Reactivity:	Human,Mouse,Rat
Purification:	The Ab is from purified rabbit serum by affinity purification via sequential chromatography on phospho- and non-phospho-peptide affinity columns.
Specificity:	Phospho-ROCK1(Ser282) Ab detects endogenous levels of ROCK1 only when phosphorylated at Ser282.
Immunogen:	A synthesized peptide derived from human ROCK1 around the phosphorylation site of Ser282.
Uniprot:	Q13464
Subcellular Location:	Cytoplasm. Cytoplasm, cytoskeleton, microtubule organizing center, centrosome, centriole. Golgi apparatus membrane. Cell projection, bleb. Cytoplasm, cytoskeleton. Cell membrane. Cell projection, lamellipodium. Cell projection, ruffle. Associated with the mother centriole and an intercentriolar linker. Colocalizes with ITGB1BP1 and ITGB1 at the cell membrane predominantly in lamellipodia and membrane ruffles, but also in retraction fibers. Localizes at the cell membrane in an ITGB1BP1-dependent manner (By similarity). A small proportion is associated with Golgi membranes.
Tissue Specificity:	Detected in blood platelets.
Similarity:	The C-terminal auto-inhibitory domain interferes with kinase activity. RHOA binding leads to a conformation change and activation of the kinase. Truncated ROCK1 is constitutively activated.Belongs to the protein kinase superfamily. AGC Ser/Thr protein kinase family.
Storage Condition and Buffer:	Rabbit IgG in phosphate buffered saline , pH 7.4, 150mM NaCl, 0.02% sodium azide and 50% glycerol.Store at -20 °C.Stable for 12 months from date of receipt.



Western blot analysis of Phospho-ROCK1(Ser282) in lysates of NIH-3T3, using Phospho-ROCK1(Ser282) Ab(AF4304).

**IMPORTANT:** For western blot, incubate membrane with diluted primary Ab in 5% w/v milk, 1X TBS, 0.1% Tween@20 at 4°C with gentle shaking, overnight.

For Research Use Only. Not for use in diagnostic and therapeutic procedures. Not for resale without express authorization.