

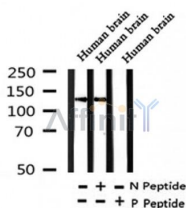
Phospho-PER1(Ser704) Ab

Cat.#: AF4302
Size: 50ul,100ul,200ul

Concn.: 1mg/ml
Source: Rabbit

Mol.Wt.: 136kDa
Clonality: Polyclonal

Application:	WB 1:500-1:2000
Reactivity:	Human, Mouse
Purification:	The Ab is from purified rabbit serum by affinity purification via sequential chromatography on phospho- and non-phospho-peptide affinity columns.
Specificity:	Phospho-PER1(Ser704) Ab detects endogenous levels of PER1 only when phosphorylated at Ser704.
Immunogen:	A synthesized peptide derived from human PER1 around the phosphorylation site of Ser704.
Uniprot:	O15534
Subcellular Location:	Nucleus. Cytoplasm. Mainly nuclear. Nucleocytoplasmic shuttling is effected by interaction with other circadian core oscillator proteins and/or by phosphorylation. Retention of PER1 in the cytoplasm occurs through PER1-PER2 heterodimer formation or by interaction with CSNK1E and/or phosphorylation which appears to mask the PER1 nuclear localization signal. Also translocated to the nucleus by CRY1 or CRY2.
Tissue Specificity:	Widely expressed. Expressed in hair follicles (at protein level). Found in heart, brain, placenta, lung, liver, skeletal muscle, pancreas, kidney, spleen, thymus, prostate, testis, ovary and small intestine. Highest level in skeletal muscle.
Storage Condition and Buffer:	Rabbit IgG in phosphate buffered saline , pH 7.4, 150mM NaCl, 0.02% sodium azide and 50% glycerol. Store at -20 °C. Stable for 12 months from date of receipt.



IMPORTANT: For western blot, incubate membrane with diluted primary Ab

in 5% w/v milk , 1X TBS, 0.1% Tween@20 at 4°C with gentle shaking,
overnight.

For Research Use Only. Not for use in diagnostic and therapeutic
procedures. Not for resale without express authorization.