

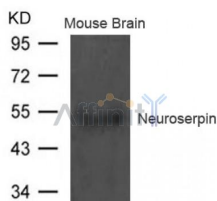
## Neuroserpin Ab

Cat.#: AF4065  
Size: 50ul,100ul,200ul

Concn.: 1mg/ml  
Source: Rabbit

Mol.Wt.: 55kd  
Clonality: Polyclonal

Application:	WB 1:500-1:1000
Reactivity:	Human,Mouse,Rat
Purification:	The antiserum was purified by peptide affinity chromatography using SulfoLink™ Coupling Resin (Thermo Fisher Scientific).
Specificity:	The Ab detects endogenous level of total Neuroserpin protein.
Immunogen:	Peptide sequence around aa.402~406(T-S-G-H-D) derived from Human Neuroserpin.
Uniprot:	Q99574
Description:	Serine protease inhibitor that inhibits plasminogen activators and plasmin but not thrombin. May be involved in the formation or reorganization of synaptic connections as well as for synaptic plasticity in the adult nervous system. May protect neurons from cell damage by tissue-type plasminogen activator.
Subcellular Location:	Secreted.
Tissue Specificity:	Detected in brain cortex and hippocampus pyramidal neurons (at protein level) (PubMed:17040209). Predominantly expressed in the brain (PubMed:9070919).
Similarity:	Belongs to the serpin family.
Storage Condition and Buffer:	Supplied at 1.0mg/mL in phosphate buffered saline (without Mg2+ and Ca2+), pH 7.4, 150mM NaCl, 0.02% sodium azide and 50% glycerol.



Western blot analysis of extract from Mouse brain tissue using Neuroserpin Ab

**IMPORTANT:** For western blot, incubate membrane with diluted primary Ab in 5% w/v milk , 1X TBS, 0.1% Tween@20 at 4°C with gentle shaking, overnight.

For Research Use Only. Not for use in diagnostic and therapeutic procedures. Not for resale without express authorization.