

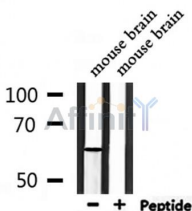
## Phospho-PAK1 (Thr212) Ab

Cat.#: AF3424  
 Size: 100ul,200ul

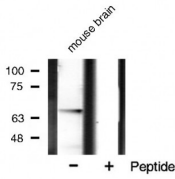
Concn.: 1mg/ml  
 Source: Rabbit

Mol.Wt.: 65kDa  
 Clonality: Polyclonal

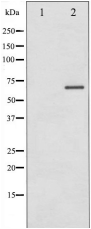
Application:	WB 1:500-1:2000 IHC 1:50-1:200, IF/ICC 1:100-1:500
Reactivity:	Human, Mouse, Rat
Purification:	The Ab is from purified rabbit serum by affinity purification via sequential chromatography on phospho- and non-phospho-peptide affinity columns.
Specificity:	Phospho-PAK1 (Thr212) Ab detects endogenous levels of PAK1 only when phosphorylated at Threonine 212.
Immunogen:	A synthesized peptide derived from human PAK1 around the phosphorylation site of Threonine 212.
Uniprot:	Q13153
Description:	PAK proteins are critical effectors that link RhoGTPases to cytoskeleton reorganization and nuclear signaling. PAK proteins, a family of serine/threonine p21-activating kinases, include PAK1, PAK2, PAK3 and PAK4.
Subcellular Location:	Cytoplasm. Cell junction > focal adhesion. Recruited to focal adhesions upon activation.
Tissue Specificity:	Overexpressed in gastric cancer cells and tissues (at protein level) (PubMed:25766321).
Similarity:	Belongs to the protein kinase superfamily. STE Ser/Thr protein kinase family. STE20 subfamily.
Storage Condition and Buffer:	Rabbit IgG in phosphate buffered saline, pH 7.4, 150mM NaCl, 0.02% sodium azide and 50% glycerol. Store at -20 °C. Stable for 12 months from date of receipt.



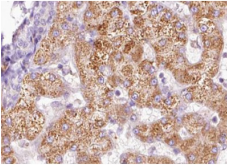
Western blot analysis of extracts from mouse brain, using Phospho-PAK1 (Thr212) Ab.



Western blot analysis of PAK1 phosphorylation expression in mouse brain tissue lysates, The lane on the right is treated with the antigen-specific peptide.



Western blot analysis of PAK1 phosphorylation expression in etoposide treated 293 whole cell lysates, The lane on the left is treated with the antigen-specific peptide.



AF3424 at 1/100 staining human liver carcinoma tissue sections by IHC-P. The tissue was formaldehyde fixed and a heat mediated antigen retrieval step in citrate buffer was performed. The tissue was then blocked and incubated with the Ab for 1.5 hours at 22°C. An HRP conjugated goat anti-rabbit Ab was used as the secondary.



AF3424 staining 293 by IF/ICC. The sample were fixed with PFA and permeabilized in 0.1% Triton X-100, then blocked in 10% serum for 45 minutes at 25°C. The primary Ab was diluted at 1/200 and incubated with the sample for 1 hour at 37°C. An Alexa Fluor 594 conjugated goat anti-rabbit IgG (H+L) Ab, diluted at 1/600, was used as the secondary Ab.

**IMPORTANT:** For western blot, incubate membrane with diluted primary Ab in 5% w/v milk, 1X TBS, 0.1% Tween@20 at 4°C with gentle shaking, overnight.

For Research Use Only. Not for use in diagnostic and therapeutic procedures. Not for resale without express authorization.