

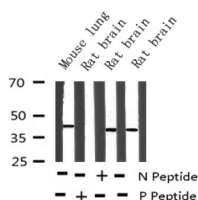
Phospho-MEK2 (Thr394) Ab

Cat.#: AF3282
Size: 100ul,200ul

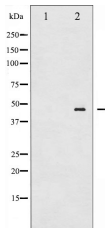
Concn.: 1mg/ml
Source: Rabbit

Mol.Wt.: 44kDa
Clonality: Polyclonal

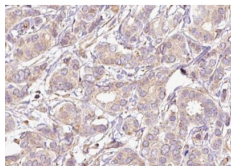
Application:	WB 1:500-1:2000 IHC 1:50-1:200 IP
Reactivity:	Human,Mouse,Rat
Purification:	The Ab is from purified rabbit serum by affinity purification via sequential chromatography on phospho- and non-phospho-peptide affinity columns.
Specificity:	Phospho-MEK2 (Thr394) Ab detects endogenous levels of MEK2 only when phosphorylated at Threonine 394.
Immunogen:	A synthesized peptide derived from human MEK2 around the phosphorylation site of Threonine 394.
Uniprot:	P36507
Description:	MEK2 a dual-specificity protein kinase of the STE7 kinase family. Phosphorylated and activated by Raf and Mos kinases. Phosphorylates a Thr and a Tyr residue in a Thr-Glu-Tyr sequence located in the activation loop of ERK2 and ERK3.
Subcellular Location:	Cytoplasm, cytoskeleton, microtubule organizing center, centrosome. Cytoplasm, cytoskeleton, microtubule organizing center, spindle pole body. Cytoplasm. Nucleus. Localizes at centrosomes during prometaphase, midzone during anaphase and midbody during telophase/cytokinesis.
Similarity:	Belongs to the protein kinase superfamily. STE Ser/Thr protein kinase family. MAP kinase kinase subfamily.
Storage Condition and Buffer:	Rabbit IgG in phosphate buffered saline , pH 7.4, 150mM NaCl, 0.02% sodium azide and 50% glycerol.Store at -20 °C.Stable for 12 months from date of receipt.



Western blot analysis of Phospho-MEK2 (Thr394) expression in various lysates



Western blot analysis of MEK2 phosphorylation expression in ovary cancer whole cell lysates, The lane on the left is treated with the antigen-specific peptide.



AF3282 at 1/100 staining human breast carcinoma tissue sections by IHC-P. The tissue was formaldehyde fixed and a heat mediated antigen retrieval step in citrate buffer was performed. The tissue was then blocked and incubated with the Ab for 1.5 hours at 22°C. An HRP conjugated goat anti-rabbit Ab was used as the secondary.

IMPORTANT: For western blot, incubate membrane with diluted primary Ab in 5% w/v milk, 1X TBS, 0.1% Tween@20 at 4°C with gentle shaking, overnight.

For Research Use Only. Not for use in diagnostic and therapeutic procedures. Not for resale without express authorization.