

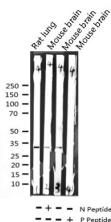
## Phospho-C/EBP beta (Thr235/188) Ab

Cat.#: AF3202  
Size: 100ul,200ul

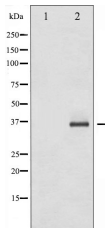
Concn.: 1mg/ml  
Source: Rabbit

Mol.Wt.: 36kDa  
Clonality: Polyclonal

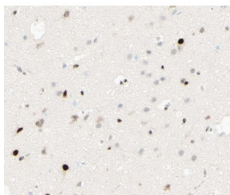
Application:	WB 1:500-1:2000 IHC 1:50-1:200 IF/ICC 1:100-1:500
Reactivity:	Human, Mouse, Rat
Purification:	The Ab is from purified rabbit serum by affinity purification via sequential chromatography on phospho- and non-phospho-peptide affinity columns.
Specificity:	Phospho-C/EBP- beta (Thr235/188) Ab detects endogenous levels of C/EBP- beta only when phosphorylated at Threonine 235/188.
Immunogen:	A synthesized peptide derived from human C/EBP- beta around the phosphorylation site of Threonine 235/188.
Uniprot:	P17676
Description:	The protein encoded by this intronless gene is a bZIP transcription factor which can bind as a homodimer to certain DNA regulatory regions. It can also form heterodimers with the related proteins CEBP-alpha, CEBP-delta, and CEBP-gamma.
Subcellular Location:	Nucleus.
Tissue Specificity:	Expressed at low levels in the lung, kidney and spleen.
Similarity:	the 9aaTAD motif is a transactivation domain present in a large number of yeast and animal transcription factors. Belongs to the bZIP family. C/EBP subfamily.
Storage Condition and Buffer:	Rabbit IgG in phosphate buffered saline , pH 7.4, 150mM NaCl, 0.02% sodium azide and 50% glycerol. Store at -20 °C. Stable for 12 months from date of receipt.



Western blot analysis of Phospho-C/EBP beta (Thr235/188) expression in various lysates



Western blot analysis of C/EBP- beta phosphorylation expression in HepG2 whole cell lysates, The lane on the left is treated with the antigen-specific peptide.



AF3202 at 1/100 staining human brain tissue sections by IHC-P. The tissue was formaldehyde fixed and a heat mediated antigen retrieval step in citrate buffer was performed. The tissue was then blocked and incubated with the Ab for 1.5 hours at 22°C. An HRP conjugated goat anti-rabbit Ab was used as the secondary.



AF3202 staining HepG2 by IF/ICC. The sample were fixed with PFA and permeabilized in 0.1% Triton X-100, then blocked in 10% serum for 45 minutes at 25°C. The primary Ab was diluted at 1/200 and incubated with the sample for 1 hour at 37°C. An Alexa Fluor 594 conjugated goat anti-rabbit IgG (H+L) Ab, diluted at 1/600, was used as the secondary Ab.



AF3202 staining K-562 cells by IF/ICC. The sample were fixed with PFA and permeabilized in 0.1% Triton X-100, then blocked in 10% serum for 45 minutes at 25°C. The primary Ab was diluted at 1/200 and incubated with the sample for 1 hour at 37°C. An Alexa Fluor 594 conjugated goat anti-rabbit IgG (H+L) Ab (Cat.# S0006), diluted at 1/600, was used as secondary Ab.

**IMPORTANT:** For western blot, incubate membrane with diluted primary Ab in 5% w/v milk, 1X TBS, 0.1% Tween@20 at 4°C with gentle shaking, overnight.

For Research Use Only. Not for use in diagnostic and therapeutic procedures. Not for resale without express authorization.