

---

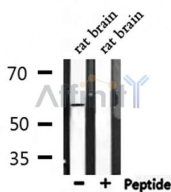
## Phospho-ATF2 (Ser62/44) Ab

Cat.#: AF3176  
Size: 100ul,200ul

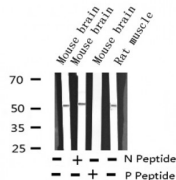
Concn.: 1mg/ml  
Source: Rabbit

Mol.Wt.: 52kDa  
Clonality: Polyclonal

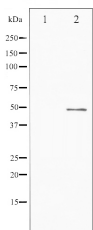
Application:	WB 1:500-1:2000 IHC 1:50-1:200 IP, IF/ICC 1:100-1:500
Reactivity:	Human,Mouse,Rat
Purification:	The Ab is from purified rabbit serum by affinity purification via sequential chromatography on phospho- and non-phospho-peptide affinity columns.
Specificity:	Phospho-ATF2 (Ser62 or 44) Ab detects endogenous levels of ATF2 only when phosphorylated at Serine 62 or 44.
Immunogen:	A synthesized peptide derived from human ATF2 around the phosphorylation site of Serine 62 or 44.
Uniprot:	P15336
Description:	This gene encodes a transcription factor that is a member of the leucine zipper family of DNA binding proteins. This protein binds to the cAMP-responsive element (CRE), an octameric palindrome. The protein forms a homodimer or heterodimer with c-Jun and stimulates CRE-dependent transcription. The protein is also a histone acetyltransferase (HAT) that specifically acetylates histones H2B and H4 in vitro;
Subcellular Location:	Nucleus.
Tissue Specificity:	Ubiquitously expressed, with more abundant expression in the brain.
Similarity:	The nuclear export signal 1 (N-NES) negatively regulates its nuclear localization and transcriptional activity.Belongs to the bZIP family. ATF subfamily.
Storage Condition and Buffer:	Rabbit IgG in phosphate buffered saline , pH 7.4, 150mM NaCl, 0.02% sodium azide and 50% glycerol.Store at -20 °C.Stable for 12 months from date of receipt.



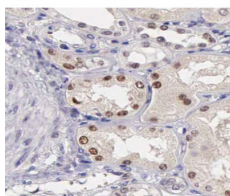
Western blot analysis of extracts from rat brain, using Phospho-ATF2 (Ser62/44) Ab.



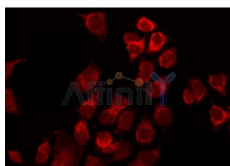
Western blot analysis of Phospho-ATF2 (Ser62 or 44) expression in various lysates



Western blot analysis of ATF2 phosphorylation expression in TNF- $\alpha$  treated HeLa whole cell lysates, The lane on the left is treated with the antigen-specific peptide.



AF3176 at 1/200 staining human kidney tissue sections by IHC-P. The tissue was formaldehyde fixed and a heat mediated antigen retrieval step in citrate buffer was performed. The tissue was then blocked and incubated with the Ab for 1.5 hours at 22°C. An HRP conjugated goat anti-rabbit Ab was used as the secondary.



AF3176 staining HeLa by IF/ICC. The sample were fixed with PFA and permeabilized in 0.1% Triton X-100, then blocked in 10% serum for 45 minutes at 25°C. The primary Ab was diluted at 1/200 and incubated with the sample for 1 hour at 37°C. An Alexa Fluor 594 conjugated goat anti-rabbit IgG (H+L) Ab, diluted at 1/600, was used as the secondary Ab.

**IMPORTANT:** For western blot, incubate membrane with diluted primary Ab in 5% w/v milk, 1X TBS, 0.1% Tween@20 at 4°C with gentle shaking, overnight.

For Research Use Only. Not for use in diagnostic and therapeutic procedures. Not for resale without express authorization.