

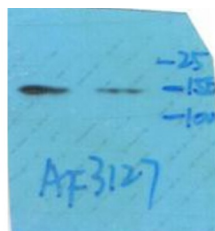
Phospho-CD45 (Ser1007) Ab

Cat.#: AF3127
Size: 100ul,200ul

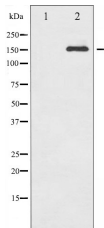
Concn.: 1mg/ml
Source: Rabbit

Mol.Wt.: 150kDa
Clonality: Polyclonal

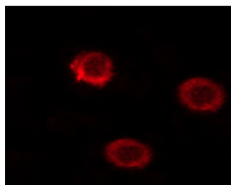
Application:	WB 1:500-1:2000 IF/ICC 1:100-1:500
Reactivity:	Human,Mouse,Rat
Purification:	The Ab is from purified rabbit serum by affinity purification via sequential chromatography on phospho- and non-phospho-peptide affinity columns.
Specificity:	Phospho-CD45 (Ser1007) Ab detects endogenous levels of CD45 only when phosphorylated at Serine 1007.
Immunogen:	A synthesized peptide derived from human CD45 around the phosphorylation site of Serine 1007.
Uniprot:	P08575
Description:	The protein encoded by this gene is a member of the protein tyrosine phosphatase (PTP) family. PTPs are known to be signaling molecules that regulate a variety of cellular processes including cell growth, differentiation, mitotic cycle, and oncogenic transformation.
Subcellular Location:	Membrane. Membrane raft. Colocalized with DPP4 in membrane rafts.
Similarity:	The first PTPase domain interacts with SKAP1. Belongs to the protein-tyrosine phosphatase family. Receptor class 1/6 subfamily.
Storage Condition and Buffer:	Rabbit IgG in phosphate buffered saline , pH 7.4, 150mM NaCl, 0.02% sodium azide and 50% glycerol. Store at -20 °C. Stable for 12 months from date of receipt.



Western blot analysis of Phospho-CD45 (Ser1007) Ab expression in TNF treated Hela cells lysates. The lane on the right is treated with the antigen-specific peptide.



Western blot analysis of CD45 phosphorylation expression in TNF treated HeLa whole cell lysates, The lane on the left is treated with the antigen-specific peptide.



AF3127 staining HeLa cells by ICC/IF. Cells were fixed with PFA and permeabilized in 0.1% saponin prior to blocking in 10% serum for 45 minutes at 37°C. The primary Ab was diluted 1/400 and incubated with the sample for 1 hour at 37°C. A Alexa Fluor® 594 conjugated goat polyclonal to rabbit IgG (H+L), diluted 1/600 was used as secondary Ab.

IMPORTANT: For western blot, incubate membrane with diluted primary Ab in 5% w/v milk, 1X TBS, 0.1% Tween@20 at 4°C with gentle shaking, overnight.

For Research Use Only. Not for use in diagnostic and therapeutic procedures. Not for resale without express authorization.