

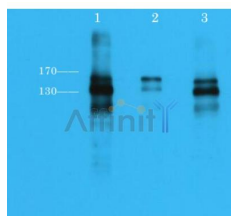
Phospho-Ret (Tyr1062) Ab

Cat.#: AF3120
Size: 100ul,200ul

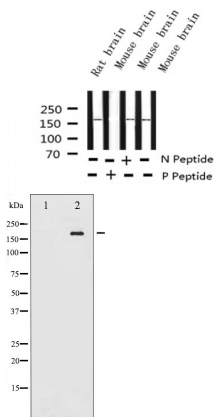
Concn.: 1mg/ml
Source: Rabbit

Mol.Wt.: 175kDa
Clonality: Polyclonal

| | |
|-------------------------------|--|
| Application: | WB 1:500-1:2000, IF/ICC 1:100-1:500 |
| Reactivity: | Human,Mouse,Rat |
| Purification: | The Ab is from purified rabbit serum by affinity purification via sequential chromatography on phospho- and non-phospho-peptide affinity columns. |
| Specificity: | Phospho-Ret (Tyr1062) Ab detects endogenous levels of Ret only when phosphorylated at Tyrosine 1062. |
| Immunogen: | A synthesized peptide derived from human Ret around the phosphorylation site of Tyrosine 1062. |
| Uniprot: | P07949 |
| Description: | This gene, a member of the cadherin superfamily, encodes one of the receptor tyrosine kinases, which are cell-surface molecules that transduce signals for cell growth and differentiation. This gene plays a crucial role in neural crest development, and it can undergo oncogenic activation in vivo and in vitro by cytogenetic rearrangement. |
| Subcellular Location: | Membrane. |
| Tissue Specificity: | Positively regulated by NKX2-1, PHOX2B, SOX10 and PAX3. |
| Similarity: | Belongs to the protein kinase superfamily. Tyr protein kinase family. |
| Storage Condition and Buffer: | Rabbit IgG in phosphate buffered saline , pH 7.4, 150mM NaCl, 0.02% sodium azide and 50% glycerol.Store at -20 °C.Stable for 12 months from date of receipt. |



Western blot analysis of extracts from ret transfected 293 cells lysates, using Phospho-Ret (Tyr1062) Ab.
Lane1: Phosphotyrosine mAb at 1:2000;
Lane2: Ret (Phospho-Tyr905) Ab(AF8055) at 1:2000;
Lane3: Phospho-Ret (Tyr1062) Ab(AF3120) at 1:2000.



Western blot analysis of Phospho-Ret (Tyr1062) expression in various lysates

Western blot analysis of Ret phosphorylation expression in K562 whole cell lysates. The lane on the left is treated with the antigen-specific peptide.



AF3120 staining HeLa cells by IF/ICC. The sample were fixed with PFA and permeabilized in 0.1% Triton X-100, then blocked in 10% serum for 45 minutes at 25°C. The primary Ab was diluted at 1/200 and incubated with the sample for 1 hour at 37°C. An Alexa Fluor 594 conjugated goat anti-rabbit IgG (H+L) Ab (Cat.# S0006), diluted at 1/600, was used as secondary Ab.

IMPORTANT: For western blot, incubate membrane with diluted primary Ab in 5% w/v milk, 1X TBS, 0.1% Tween@20 at 4°C with gentle shaking, overnight.

For Research Use Only. Not for use in diagnostic and therapeutic procedures. Not for resale without express authorization.