

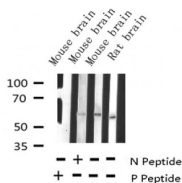
## Phospho-Tyrosine Hydroxylase (Ser19) Ab

Cat.#: AF3112  
Size: 100ul,200ul

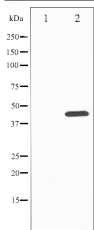
Concn.: 1mg/ml  
Source: Rabbit

Mol.Wt.: 60 kDa  
Clonality: Polyclonal

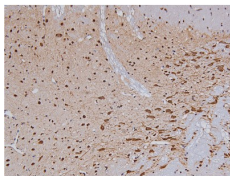
Application:	WB 1:500-1:2000 IHC 1:50-1:200 IF/ICC 1:100-1:500
Reactivity:	Human,Mouse,Rat
Purification:	The Ab is from purified rabbit serum by affinity purification via sequential chromatography on phospho- and non-phospho-peptide affinity columns.
Specificity:	Phospho-Tyrosine Hydroxylase (Ser19) Ab detects endogenous levels of Tyrosine Hydroxylase only when phosphorylated at Serine 19.
Immunogen:	A synthesized peptide derived from human Tyrosine Hydroxylase around the phosphorylation site of Serine 19.
Uniprot:	P07101
Description:	Tyrosine hydroxylase (EC 1.14.16.2) is involved in the conversion of phenylalanine to dopamine. As the rate-limiting enzyme in the synthesis of catecholamines, tyrosine hydroxylase has a key role in the physiology of adrenergic neurons.
Tissue Specificity:	Mainly expressed in the brain and adrenal glands.
Similarity:	Belongs to the bipterin-dependent aromatic amino acid hydroxylase family.
Storage Condition and Buffer:	Rabbit IgG in phosphate buffered saline , pH 7.4, 150mM NaCl, 0.02% sodium azide and 50% glycerol.Store at -20 °C.Stable for 12 months from date of receipt.



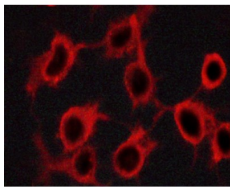
Western blot analysis of Phospho-Tyrosine Hydroxylase (Ser19) expression in various lysates



Western blot analysis of Tyrosine Hydroxylase phosphorylation expression in PC12 whole cell lysates, The lane on the left is treated with the antigen-specific peptide.



AF3112 at 1/200 staining Rat brain tissue sections by IHC-P. The tissue was formaldehyde fixed and a heat mediated antigen retrieval step in citrate buffer was performed. The tissue was then blocked and incubated with the Ab for 1.5 hours at 22°C. An HRP conjugated goat anti-rabbit Ab was used as the secondary.



AF3112 staining HeLa cells by ICC/IF. Cells were fixed with PFA and permeabilized in 0.1% saponin prior to blocking in 10% serum for 45 minutes at 37°C. The primary Ab was diluted 1/400 and incubated with the sample for 1 hour at 37°C. A Alexa Fluor 594 conjugated goat polyclonal to rabbit IgG (H+L), diluted 1/600 was used as secondary Ab.

**IMPORTANT:** For western blot, incubate membrane with diluted primary Ab in 5% w/v milk, 1X TBS, 0.1% Tween@20 at 4°C with gentle shaking, overnight.

For Research Use Only. Not for use in diagnostic and therapeutic procedures. Not for resale without express authorization.