

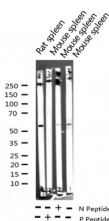
Phospho-Lck (Tyr393) Ab

Cat.#: AF3101
Size: 100ul,200ul

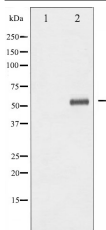
Concn.: 1mg/ml
Source: Rabbit

Mol.Wt.: 56kDa
Clonality: Polyclonal

Application:	WB 1:500-1:2000 IF/ICC 1:100-1:500
Reactivity:	Human,Mouse,Rat
Purification:	The Ab is from purified rabbit serum by affinity purification via sequential chromatography on phospho- and non-phospho-peptide affinity columns.
Specificity:	Phospho-Lck (Tyr393) Ab detects endogenous levels of Lck only when phosphorylated at Tyrosine 393.
Immunogen:	A synthesized peptide derived from human Lck around the phosphorylation site of Tyrosine 393.
Uniprot:	P06239
Description:	Tyrosine kinase that plays an essential role for the selection and maturation of developing t-cell in the thymus and in mature t-cell function.
Subcellular Location:	Cytoplasm. Cell membrane. Present in lipid rafts in an unactive form.
Tissue Specificity:	Expressed specifically in lymphoid cells.
Similarity:	The SH2 domain mediates interaction with SQSTM1. Interaction is regulated by Ser-59 phosphorylation. Belongs to the protein kinase superfamily. Tyr protein kinase family. SRC subfamily.
Storage Condition and Buffer:	Rabbit IgG in phosphate buffered saline , pH 7.4, 150mM NaCl, 0.02% sodium azide and 50% glycerol. Store at -20 °C. Stable for 12 months from date of receipt.



Western blot analysis of Phospho-Lck (Tyr393) expression in various lysates



Western blot analysis of Lck phosphorylation expression in HeLa whole cell lysates. The lane on the left is treated with the antigen-specific peptide.



AF3101 staining Jurkat cells by ICC/IF. Cells were fixed with PFA and permeabilized in 0.1% saponin prior to blocking in 10% serum for 45 minutes at 37°C. The primary Ab was diluted 1/400 and incubated with the sample for 1 hour at 37°C. A Alexa Fluor® 594 conjugated goat polyclonal to rabbit IgG (H+L), diluted 1/600 was used as secondary Ab.

IMPORTANT: For western blot, incubate membrane with diluted primary Ab in 5% w/v milk, 1X TBS, 0.1% Tween@20 at 4°C with gentle shaking, overnight.

For Research Use Only. Not for use in diagnostic and therapeutic procedures. Not for resale without express authorization.