

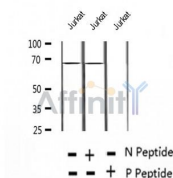
## Phospho-SHP-1 (Tyr564) Ab

Cat.#: AF2406  
Size: 100ul, 200ul

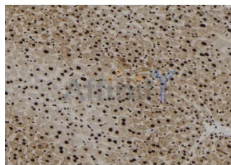
Concn.: 1mg/ml  
Source: Rabbit

Mol.Wt.: 68kDa  
Clonality: Polyclonal

|                               |  |
|-------------------------------|--|
| Application:                  | WB 1:500-1:2000, IHC 1:50-1:200  |
| Reactivity:                   | Human, Mouse   |
| Purification:                 | The Ab is from purified rabbit serum by affinity purification via sequential chromatography on phospho- and non-phospho-peptide affinity columns.  |
| Specificity:                  | Phospho-SHP-1 (Tyr564) Ab detects endogenous levels of SHP-1.  |
| Immunogen:                    | A synthesized peptide derived from human SHP-1 around the phosphorylation site of Tyr564.  |
| Uniprot:                      | P29350   |
| Subcellular Location:         | Cytoplasm. Nucleus. In neurons, translocates into the nucleus after treatment with angiotensin II.   |
| Tissue Specificity:           | Isoform 1 is expressed in hematopoietic cells. Isoform 2 is expressed in non-hematopoietic cells.  |
| Similarity:                   | The N-terminal SH2 domain functions as an auto-inhibitory domain, blocking the catalytic domain in the ligand-free close conformation. Belongs to the protein-tyrosine phosphatase family. Non-receptor class 2 subfamily. |
| Storage Condition and Buffer: | Rabbit IgG in phosphate buffered saline, pH 7.4, 150mM NaCl, 0.02% sodium azide and 50% glycerol. Store at -20 °C. Stable for 12 months from date of receipt.  |



Western blot analysis of extracts of JK cells, using Phospho-SHP-1 (Tyr564) Ab.



AF2406 at 1/100 staining Mouse liver tissue by IHC-P. The sample was formaldehyde fixed and a heat mediated antigen retrieval step in citrate buffer was performed. The sample was then blocked and incubated with the Ab for 1.5 hours at 22°C. An HRP conjugated goat anti-rabbit Ab was used as the secondary.

**IMPORTANT:** For western blot, incubate membrane with diluted primary Ab in 5% w/v milk , 1X TBS, 0.1% Tween@20 at 4°C with gentle shaking, overnight.

For Research Use Only. Not for use in diagnostic and therapeutic procedures. Not for resale without express authorization.