

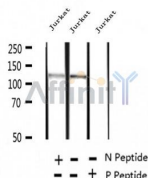
Phospho-REPS1 (Ser709) Ab

Cat.#: AF2396
Size: 100ul,200ul

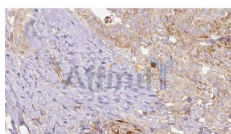
Concn.: 1mg/ml
Source: Rabbit

Mol.Wt.: 125kDa
Clonality: Polyclonal

Application:	WB 1:500-1:2000, IHC 1:50-1:200
Reactivity:	Human, Mouse
Purification:	The Ab is from purified rabbit serum by affinity purification via sequential chromatography on phospho- and non-phospho-peptide affinity columns.
Specificity:	Phospho-REPS1 (Ser709) Ab detects endogenous levels of REPS1.
Immunogen:	A synthesized peptide derived from human REPS1 around the phosphorylation site of Ser709.
Uniprot:	Q96D71
Subcellular Location:	Membrane > clathrin-coated pit. Colocalize with ITSN1 at the plasma membrane in structures that are most probably clathrin-coated pits.
Tissue Specificity:	Widely expressed with highest levels in heart and testis.
Storage Condition and Buffer:	Rabbit IgG in phosphate buffered saline , pH 7.4, 150mM NaCl, 0.02% sodium azide and 50% glycerol. Store at -20 °C. Stable for 12 months from date of receipt.



Western blot analysis of extracts of Jurkat cells, using Phospho-REPS1 (Ser709) Ab .



AF2396 at 1/100 staining Human thyroid cancer tissue by IHC-P. The sample was formaldehyde fixed and a heat mediated antigen retrieval step in citrate buffer was performed. The sample was then blocked and incubated with the Ab for 1.5 hours at 22°C. An HRP conjugated goat anti-rabbit Ab was used as the secondary.

IMPORTANT: For western blot, incubate membrane with diluted primary Ab in 5% w/v milk , 1X TBS, 0.1% Tween@20 at 4°C with gentle shaking, overnight.

For Research Use Only. Not for use in diagnostic and therapeutic procedures. Not for resale without express authorization.