

Phospho-PLCbeta3 (Ser1105) Ab

Cat.#: AF2383
Size: 100ul, 200ul

Concn.: 1mg/ml
Source: Rabbit

Mol.Wt.: 150kDa
Clonality: Polyclonal

Application: WB 1:500-1:2000, IHC 1:50-1:200

Reactivity: Human, Mouse, Rat

Purification: The Ab is from purified rabbit serum by affinity purification via sequential chromatography on phospho- and non-phospho-peptide affinity columns.

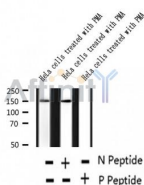
Specificity: Phospho-PLCbeta3 (Ser1105) Ab detects endogenous levels of PLCbeta3.

Immunogen: A synthesized peptide derived from human PLCbeta3 around the phosphorylation site of Ser1105.

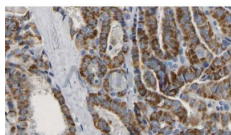
Uniprot: Q01970

Subcellular Location: Membrane.

Storage Condition and Buffer: Rabbit IgG in phosphate buffered saline, pH 7.4, 150mM NaCl, 0.02% sodium azide and 50% glycerol. Store at -20 °C. Stable for 12 months from date of receipt.



Western blot analysis of extracts of HeLa cells treated with PMA, using Phospho-PLCbeta3 (Ser1105) Ab.



AF2383 at 1/100 staining Human thyroid cancer tissue by IHC-P. The sample was formaldehyde fixed and a heat mediated antigen retrieval step in citrate buffer was performed. The sample was then blocked and incubated with the Ab for 1.5 hours at 22°C. An HRP conjugated goat anti-rabbit Ab was used as the secondary.

IMPORTANT: For western blot, incubate membrane with diluted primary Ab in 5% w/v milk, 1X TBS, 0.1% Tween@20 at 4°C with gentle shaking, overnight.



Affinity Biosciences

website: www.affbiotech.com

order: order@affbiotech.com

For Research Use Only. Not for use in diagnostic and therapeutic procedures. Not for resale without express authorization.