

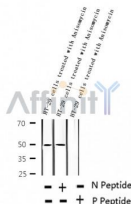
Phospho-Keratin 20 (Ser13) Ab

Cat.#: AF2356
Size: 100ul, 200ul

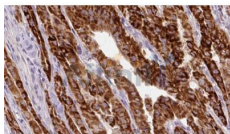
Concn.: 1mg/ml
Source: Rabbit

Mol.Wt.: 48kDa
Clonality: Polyclonal

| | |
|-------------------------------|---|
| Application: | WB 1:500-1:2000, IHC 1:50-1:200 |
| Reactivity: | Human |
| Purification: | The Ab is from purified rabbit serum by affinity purification via sequential chromatography on phospho- and non-phospho-peptide affinity columns. |
| Specificity: | Phospho-Keratin 20 (Ser13) Ab detects endogenous levels of Keratin 20. |
| Immunogen: | A synthesized peptide derived from human Keratin 20 around the phosphorylation site of Ser13. |
| Uniprot: | P35900 |
| Subcellular Location: | Cytoplasm. |
| Tissue Specificity: | Expressed predominantly in the intestinal epithelium. Expressed in luminal cells of colonic mucosa. Also expressed in the Merkel cells of keratinized oral mucosa; specifically at the tips of some rete ridges of the gingival mucosa, in the basal layer of the palatal mucosa and in the taste buds of lingual mucosa. |
| Similarity: | Belongs to the intermediate filament family. |
| Storage Condition and Buffer: | Rabbit IgG in phosphate buffered saline , pH 7.4, 150mM NaCl, 0.02% sodium azide and 50% glycerol. Store at -20 °C. Stable for 12 months from date of receipt. |



Western blot analysis of extracts of HT-29 cells treated with Anisomycin, using Phospho-Keratin 20 (Ser13) Ab.



AF2356 at 1/100 staining Human thyroid cancer tissue by IHC-P. The sample was formaldehyde fixed and a heat mediated antigen retrieval step in citrate buffer was performed. The sample was then blocked and incubated with the Ab for 1.5 hours at 22°C. An HRP conjugated goat anti-rabbit Ab was used as the secondary.

IMPORTANT: For western blot, incubate membrane with diluted primary Ab in 5% w/v milk, 1X TBS, 0.1% Tween@20 at 4°C with gentle shaking, overnight.

For Research Use Only. Not for use in diagnostic and therapeutic procedures. Not for resale without express authorization.