

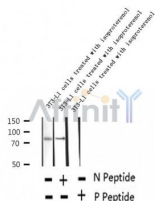
## Phospho-HSL (Ser563) Ab

Cat.#: AF2350  
Size: 100ul, 200ul

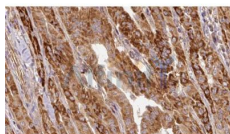
Concn.: 1mg/ml  
Source: Rabbit

Mol.Wt.: 81, 83kDa  
Clonality: Polyclonal

Application:	WB 1:500-1:2000, IHC 1:50-1:200
Reactivity:	Human, Mouse, Rat
Purification:	The Ab is from purified rabbit serum by affinity purification via sequential chromatography on phospho- and non-phospho-peptide affinity columns.
Specificity:	Phospho-HSL (Ser563) Ab detects endogenous levels of HSL.
Immunogen:	A synthesized peptide derived from human HSL around the phosphorylation site of Ser563.
Uniprot:	Q05469
Subcellular Location:	Cell membrane. Membrane > caveola. Cytoplasm > cytosol. Found in the high-density caveolae. Translocates to the cytoplasm from the caveolae upon insulin stimulation.
Similarity:	Belongs to the 'GDXG' lipolytic enzyme family.
Storage Condition and Buffer:	Rabbit IgG in phosphate buffered saline, pH 7.4, 150mM NaCl, 0.02% sodium azide and 50% glycerol. Store at -20 °C. Stable for 12 months from date of receipt.



Western blot analysis of extracts of 3T3-L1 cells treated with isoproterenol, using Phospho-HSL (Ser563) Ab.



AF2350 at 1/100 staining Human thyroid cancer tissue by IHC-P. The sample was formaldehyde fixed and a heat mediated antigen retrieval step in citrate buffer was performed. The sample was then blocked and incubated with the Ab for 1.5 hours at 22°C. An HRP conjugated goat anti-rabbit Ab was used as the secondary.

**IMPORTANT:** For western blot, incubate membrane with diluted primary Ab

---

in 5% w/v milk , 1X TBS, 0.1% Tween@20 at 4°C with gentle shaking,  
overnight.

---

For Research Use Only. Not for use in diagnostic and therapeutic  
procedures. Not for resale without express authorization.