

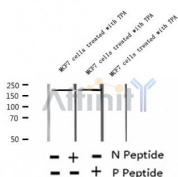
Phospho-BCL9L (Ser915) Ab

Cat.#: AF2322
Size: 100ul,200ul

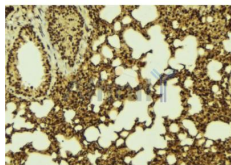
Concn.: 1mg/ml
Source: Rabbit

Mol.Wt.: 200kDa
Clonality: Polyclonal

Application:	WB 1:500-1:2000, IHC 1:50-1:200
Reactivity:	Human,Mouse,Rat
Purification:	The Ab is from purified rabbit serum by affinity purification via sequential chromatography on phospho- and non-phospho-peptide affinity columns.
Specificity:	Phospho-BCL9L (Ser915) Ab detects endogenous levels of BCL9L.
Immunogen:	A synthesized peptide derived from human BCL9L around the phosphorylation site of Ser915.
Uniprot:	Q86UU0
Subcellular Location:	Nucleus.
Tissue Specificity:	Expressed in breast, ductal and invasive ductal carcinomas of the breast, sporadic colorectal adenomas and carcinomas (at protein level). Expressed in fetal brain. Expressed in lung, amygdala, eye, prostate, pancreatic and prostate cancers, head and neck tumors and embryonal tumor.
Similarity:	The C-terminal domain is important for its transactivation activity.Belongs to the BCL9 family.
Storage Condition and Buffer:	Rabbit IgG in phosphate buffered saline , pH 7.4, 150mM NaCl, 0.02% sodium azide and 50% glycerol.Store at -20 °C.Stable for 12 months from date of receipt.



Western blot analysis of extracts of MCF7 cells treated with TPA, using Phospho-BCL9L (Ser915) Ab.



AF2322 at 1/100 staining Mouse lung tissue by IHC-P. The sample was formaldehyde fixed and a heat mediated antigen retrieval step in citrate buffer was performed. The sample was then blocked and incubated with the Ab for 1.5 hours at 22°C. An HRP conjugated goat anti-rabbit Ab was used as the secondary.

IMPORTANT: For western blot, incubate membrane with diluted primary Ab in 5% w/v milk , 1X TBS, 0.1% Tween@20 at 4°C with gentle shaking, overnight.

For Research Use Only. Not for use in diagnostic and therapeutic procedures. Not for resale without express authorization.