

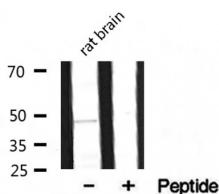
## MOK Ab

Cat.#: AF0779  
Size: 100ul,200ul

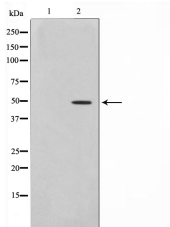
Concn.: 1mg/ml  
Source: Rabbit

Mol.Wt.: 48kDa  
Clonality: Polyclonal

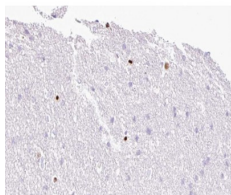
Application:	WB 1:500-1:2000 IHC 1:50-1:200
Reactivity:	Human
Purification:	The antiserum was purified by peptide affinity chromatography using SulfoLink™ Coupling Resin (Thermo Fisher Scientific).
Specificity:	MOK Ab detects endogenous levels of MOK.
Immunogen:	A synthesized peptide derived from human MOK.
Uniprot:	Q9UQ07
Description:	MOK a CMGC protein kinase of the RCK family. Possesses a Thr-Glu-Tyr motif in the activation loop domain, as do classical MAP kinases. Associates with and is apparently stabilized by HSP90.
Subcellular Location:	Cytoplasm.
Tissue Specificity:	Expressed in heart, brain, lung, kidney, and pancreas, and at very low levels in placenta, liver and skeletal muscle. Detected in retina.
Similarity:	Belongs to the protein kinase superfamily. CMGC Ser/Thr protein kinase family. CDC2/CDKX subfamily.
Storage Condition and Buffer:	Rabbit IgG in phosphate buffered saline , pH 7.4, 150mM NaCl, 0.02% sodium azide and 50% glycerol.Store at -20 °C.Stable for 12 months from date of receipt.



Western blot analysis on rat brain lysate using MOK Ab



Western blot analysis on HepG2 cell lysate using MOK Ab, The lane on the left is treated with the antigen-specific peptide.



AF0779 at 1/100 staining human Brain tissue sections by IHC-P. The tissue was formaldehyde fixed and a heat mediated antigen retrieval step in citrate buffer was performed. The tissue was then blocked and incubated with the Ab for 1.5 hours at 22°C. An HRP conjugated goat anti-rabbit Ab was used as the secondary.

**IMPORTANT:** For western blot, incubate membrane with diluted primary Ab in 5% w/v milk, 1X TBS, 0.1% Tween@20 at 4°C with gentle shaking, overnight.

For Research Use Only. Not for use in diagnostic and therapeutic procedures. Not for resale without express authorization.