

FAP-1 Ab

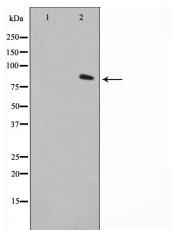
Cat.#: AF0739
Size: 100ul,200ul

Concn.: 1mg/ml
Source: Rabbit

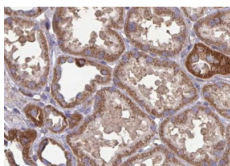
Mol.Wt.: 88kDa
Clonality: Polyclonal

Application:	WB 1:500-1:2000 IHC 1:50-1:200, IF/ICC 1:100-1:500
Reactivity:	Human,Mouse,Rat
Purification:	The antiserum was purified by peptide affinity chromatography using SulfoLink™ Coupling Resin (Thermo Fisher Scientific).
Specificity:	FAP-1 Ab detects endogenous levels of FAP-1.
Immunogen:	A synthesized peptide derived from human FAP-1.
Uniprot:	Q12884
Description:	PTPN13 Tyrosine phosphatase which regulates negatively FAS- induced apoptosis and NGFR-mediated pro-apoptotic signaling. Belongs to the protein-tyrosine phosphatase family. Non-receptor class subfamily. Interacts with TRIP6 and TNFRSF6 (Fas receptor) through its second PDZ domain. Interacts with the C-terminal SVP motif of NGFR through its third PDZ domain.
Subcellular Location:	Cell membrane. Cell projection > lamellipodium membrane. Cell projection > invadopodium membrane. Found in cell surface lamellipodia, invadopodia and on shed vesicles. Colocalized with DPP4 in invadopodia and lamellipodia of migratory activated endothelial cells in collagenous matrix. Colocalized with DPP4 on endothelial cells of capillary-like microvessels but not large vessels within invasive breast ductal carcinoma.
Tissue Specificity:	Expressed in adipose tissue. Expressed in the dermal fibroblasts in the fetal skin. Expressed in the granulation tissue of healing wounds and on reactive stromal fibroblast in epithelial cancers. Expressed in activated fibroblast-like synoviocytes from inflamed synovial tissues. Expressed in activated hepatic stellate cells (HSC) and myofibroblasts from cirrhotic liver, but not detected in normal liver. Expressed in glioma cells (at protein level). Expressed in glioblastomas and glioma cells. Isoform 1 and isoform 2 are expressed in melanoma, carcinoma and fibroblast cell lines.
Similarity:	Belongs to the peptidase S9B family.
Storage Condition and Buffer:	Rabbit IgG in phosphate buffered saline , pH 7.4, 150mM NaCl, 0.02% sodium azide and 50% glycerol.Store at -20

°C.Stable for 12 months from date of receipt.



Western blot analysis on LOVO cell lysate using FAP-1 Ab, The lane on the left is treated with the antigen-specific peptide.



AF0739 at 1/100 staining human kidney tissue sections by IHC-P. The tissue was formaldehyde fixed and a heat mediated antigen retrieval step in citrate buffer was performed. The tissue was then blocked and incubated with the Ab for 1.5 hours at 22°C. An HRP conjugated goat anti-rabbit Ab was used as the secondary.



AF0739 staining LOVO by IF/ICC. The sample were fixed with PFA and permeabilized in 0.1% Triton X-100, then blocked in 10% serum for 45 minutes at 25°C. The primary Ab was diluted at 1/200 and incubated with the sample for 1 hour at 37°C. An Alexa Fluor 594 conjugated goat anti-rabbit IgG (H+L) Ab, diluted at 1/600, was used as the secondary Ab.

IMPORTANT: For western blot, incubate membrane with diluted primary Ab in 5% w/v milk, 1X TBS, 0.1% Tween@20 at 4°C with gentle shaking, overnight.

For Research Use Only. Not for use in diagnostic and therapeutic procedures. Not for resale without express authorization.