

## STA13 Ab

Cat.#: AF0732  
Size: 100ul,200ul

Concn.: 1mg/ml  
Source: Rabbit

Mol.Wt.: 125kDa  
Clonality: Polyclonal

Application: WB 1:500-1:2000, IF/ICC 1:100-1:500

Reactivity: Human, Mouse

Purification: The antiserum was purified by peptide affinity chromatography using SulfoLink™ Coupling Resin (Thermo Fisher Scientific).

Specificity: STA13 Ab detects endogenous levels of STA13.

Immunogen: A synthesized peptide derived from human STA13.

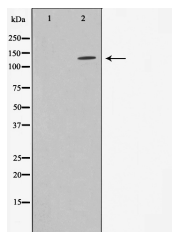
Uniprot: Q9Y3M8

Description: StARD13 GTPase-activating protein for RhoA, and perhaps for Cdc42. May be involved in regulation of cytoskeletal reorganization, cell proliferation and cell motility. Acts a tumor suppressor in hepatocellular carcinoma cells. Homodimer. Interacts with TAX1BP1. 5 isoforms of the human protein are produced by alternative splicing.

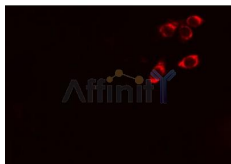
Subcellular Location: Cytoplasm. Membrane. Mitochondrion membrane. Lipid droplet.

Tissue Specificity: Ubiquitously expressed. Underexpressed in hepatocellular carcinoma cells and some breast cancer cell lines.

Storage Condition and Buffer: Rabbit IgG in phosphate buffered saline , pH 7.4, 150mM NaCl, 0.02% sodium azide and 50% glycerol. Store at -20 °C. Stable for 12 months from date of receipt.



Western blot analysis on K562 cell lysate using STA13 Ab, The lane on the left is treated with the antigen-specific peptide.



AF0732 staining Hela cells by IF/ICC. The sample were fixed with PFA and permeabilized in 0.1% Triton X-100, then blocked in 10% serum for 45 minutes at 25°C. The primary Ab was diluted at 1/200 and incubated with the sample for 1 hour at 37°C. An Alexa Fluor 594 conjugated goat anti-rabbit IgG (H+L) Ab (Cat.# S0006), diluted at 1/600, was used as secondary Ab.

**IMPORTANT:** For western blot, incubate membrane with diluted primary Ab in 5% w/v milk, 1X TBS, 0.1% Tween@20 at 4°C with gentle shaking, overnight.

For Research Use Only. Not for use in diagnostic and therapeutic procedures. Not for resale without express authorization.