

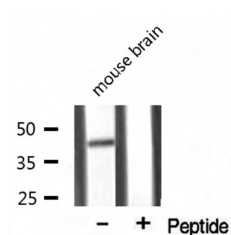
## SPR1 Ab

Cat.#: AF0723  
Size: 100ul,200ul

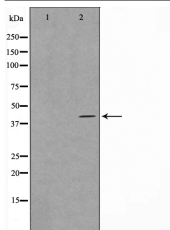
Concn.: 1mg/ml  
Source: Rabbit

Mol.Wt.: 41kDa  
Clonality: Polyclonal

Application:	WB 1:500-1:2000, IF/ICC 1:100-1:500
Reactivity:	Human,Mouse
Purification:	The antiserum was purified by peptide affinity chromatography using SulfoLink™ Coupling Resin (Thermo Fisher Scientific).
Specificity:	SPR1 Ab detects endogenous levels of SPR1.
Immunogen:	A synthesized peptide derived from human SPR1.
Uniprot:	Q15743
Description:	Protein type: Secreted; Secreted, signal peptide Cellular Component: extracellular region
Subcellular Location:	Cell membrane.
Tissue Specificity:	Found at low level in a wide range of tissues, but significantly expressed in lung, kidney, bone and nervous system.
Similarity:	Belongs to the G-protein coupled receptor 1 family.
Storage Condition and Buffer:	Rabbit IgG in phosphate buffered saline , pH 7.4, 150mM NaCl, 0.02% sodium azide and 50% glycerol.Store at -20 °C.Stable for 12 months from date of receipt.



Western blot analysis of SPR1 expression in mouse brain lysate



Western blot analysis on Jurkat cell lysate using SPR1 Ab, The lane on the left is treated with the antigen-specific peptide.



AF0723 staining HeLa by IF/ICC. The sample were fixed with PFA and permeabilized in 0.1% Triton X-100, then blocked in 10% serum for 45 minutes at 25°C. The primary Ab was diluted at 1/200 and incubated with the sample for 1 hour at 37°C. An Alexa Fluor 594 conjugated goat anti-rabbit IgG (H+L) Ab, diluted at 1/600, was used as the secondary Ab.

**IMPORTANT:** For western blot, incubate membrane with diluted primary Ab in 5% w/v milk, 1X TBS, 0.1% Tween@20 at 4°C with gentle shaking, overnight.

For Research Use Only. Not for use in diagnostic and therapeutic procedures. Not for resale without express authorization.