

## TRIP13 Ab

Cat.#: AF0570  
Size: 100ul, 200ul

Concn.: 1mg/ml  
Source: Rabbit

Mol.Wt.: 48kDa  
Clonality: Polyclonal

Application: WB 1:500-1:2000, IF/ICC 1:100-1:500

Reactivity: Human, Mouse, Rat

Purification: The antiserum was purified by peptide affinity chromatography using SulfoLink™ Coupling Resin (Thermo Fisher Scientific).

Specificity: TRIP13 Ab detects endogenous levels of TRIP13.

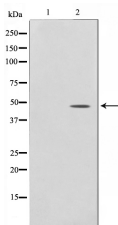
Immunogen: A synthesized peptide derived from human TRIP13.

Uniprot: Q15645

Description: Thyroid receptor interacting proteins (TRIPs) specifically interact with the ligand binding domain of the thyroid receptor (TR). TRIP13 does not require the presence of thyroid hormone for its interaction.

Similarity: Belongs to the AAA ATPase family. PCH2 subfamily.

Storage Condition and Buffer: Rabbit IgG in phosphate buffered saline, pH 7.4, 150mM NaCl, 0.02% sodium azide and 50% glycerol. Store at -20 °C. Stable for 12 months from date of receipt.



Western blot analysis on LOVO cell lysate using TRIP13 Ab. The lane on the left is treated with the antigen-specific peptide.



AF0570 staining LOVO by IF/ICC. The sample were fixed with PFA and permeabilized in 0.1% Triton X-100, then blocked in 10% serum for 45 minutes at 25°C. The primary Ab was diluted at 1/200 and incubated with the sample for 1 hour at 37°C. An Alexa Fluor 594 conjugated goat anti-rabbit IgG (H+L) Ab, diluted at 1/600, was used as the secondary Ab.

**IMPORTANT:** For western blot, incubate membrane with diluted primary Ab

---

in 5% w/v milk , 1X TBS, 0.1% Tween@20 at 4°C with gentle shaking,  
overnight.

---

For Research Use Only. Not for use in diagnostic and therapeutic  
procedures. Not for resale without express authorization.