

## DCLK3 Ab

Cat.#: AF0437  
Size: 100ul,200ul

Concn.: 1mg/ml  
Source: Rabbit

Mol.Wt.: 73kDa  
Clonality: Polyclonal

Application: IHC 1:50-1:200, WB 1:500-1:2000

Reactivity: Human,Monkey

Purification: The antiserum was purified by peptide affinity chromatography using SulfoLink™ Coupling Resin (Thermo Fisher Scientific).

Specificity: DCLK3 Ab detects endogenous levels of DCLK3.

Immunogen: A synthesized peptide derived from human DCLK3.

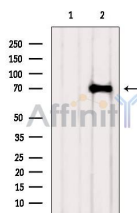
Uniprot: Q9C098

Description: DCAMKL3 Belongs to the protein kinase superfamily. CAMK Ser/Thr protein kinase family. CaMK subfamily.

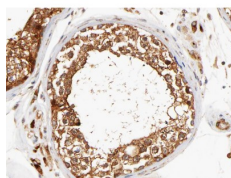
Subcellular Location: Cytoplasm. Nucleus.

Similarity: Belongs to the protein kinase superfamily. CAMK Ser/Thr protein kinase family. CaMK subfamily.

Storage Condition and Buffer: Rabbit IgG in phosphate buffered saline , pH 7.4, 150mM NaCl, 0.02% sodium azide and 50% glycerol.Store at -20 °C.Stable for 12 months from date of receipt.



Western blot analysis of extracts from VERO, using DCLK3 Ab. The lane on the left was treated with blocking peptide.



AF0437 at 1/100 staining human testis tissue sections by IHC-P. The tissue was formaldehyde fixed and a heat mediated antigen retrieval step in citrate buffer was performed. The tissue was then blocked and incubated with the Ab for 1.5 hours at 22°C. An HRP conjugated goat anti-rabbit Ab was used as the secondary.

**IMPORTANT:** For western blot, incubate membrane with diluted primary Ab in 5% w/v milk , 1X TBS, 0.1% Tween@20 at 4°C with gentle shaking, overnight.

For Research Use Only. Not for use in diagnostic and therapeutic procedures. Not for resale without express authorization.