

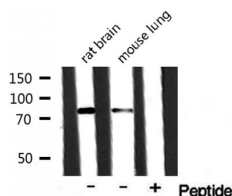
RBAK Ab

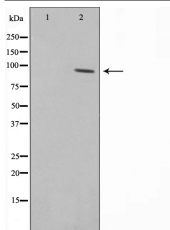
Cat.#: AF0422
Size: 100ul,200ul

Concn.: 1mg/ml
Source: Rabbit

Mol.Wt.: 85kDa
Clonality: Polyclonal

Application:	WB 1:500-1:2000, IF/ICC 1:100-1:500
Reactivity:	Human,Mouse,Rat
Purification:	The antiserum was purified by peptide affinity chromatography using SulfoLink™ Coupling Resin (Thermo Fisher Scientific).
Specificity:	RBAK Ab detects endogenous levels of RBAK.
Immunogen:	A synthesized peptide derived from human RBAK.
Uniprot:	Q9NYW8
Description:	RBAK May repress E2F-dependent transcription. May promote AR- dependent transcription. Belongs to the krueppel C2H2-type zinc-finger protein family. Interacts with AR and RB1. May also interact with other nuclear hormone receptors such as NR3C1/GR.
Subcellular Location:	Nucleus.
Tissue Specificity:	Expressed in bone, brain, heart, kidney, liver, lung, pancreas and placenta.
Similarity:	Belongs to the krueppel C2H2-type zinc-finger protein family.
Storage Condition and Buffer:	Rabbit IgG in phosphate buffered saline , pH 7.4, 150mM NaCl, 0.02% sodium azide and 50% glycerol.Store at -20 °C.Stable for 12 months from date of receipt.





Western blot analysis on HepG2 cell lysate using RBAK Ab, The lane on the left is treated with the antigen-specific peptide.



AF0422 staining HepG2 by IF/ICC. The sample were fixed with PFA and permeabilized in 0.1% Triton X-100, then blocked in 10% serum for 45 minutes at 25°C. The primary Ab was diluted at 1/200 and incubated with the sample for 1 hour at 37°C. An Alexa Fluor 594 conjugated goat anti-rabbit IgG (H+L) Ab, diluted at 1/600, was used as the secondary Ab.

IMPORTANT: For western blot, incubate membrane with diluted primary Ab in 5% w/v milk, 1X TBS, 0.1% Tween@20 at 4°C with gentle shaking, overnight.

For Research Use Only. Not for use in diagnostic and therapeutic procedures. Not for resale without express authorization.