

CIB2 Ab

Cat.#: AF0349
Size: 100ul, 200ul

Concn.: 1mg/ml
Source: Rabbit

Mol.Wt.: 21kDa
Clonality: Polyclonal

Application: IHC 1:50-1:200 WB 1:1000

Reactivity: Human, Mouse, Rat

Purification: The antiserum was purified by peptide affinity chromatography using SulfoLink™ Coupling Resin (Thermo Fisher Scientific).

Specificity: CIB2 Ab detects endogenous levels of CIB2.

Immunogen: A synthesized peptide derived from human CIB2.

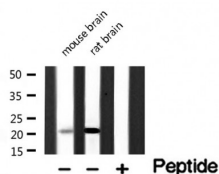
Uniprot: O75838

Description: CIB Protein type: Calcium-binding protein
Function: calcium ion binding

Subcellular Location: Plasma membrane;

Tissue Specificity: Widely expressed (PubMed:23023331).

Storage Condition and Buffer: Rabbit IgG in phosphate buffered saline, pH 7.4, 150mM NaCl, 0.02% sodium azide and 50% glycerol. Store at -20 °C. Stable for 12 months from date of receipt.



Western blot analysis of CIB2 Ab expression in Various tissues lysates. The lane on the right is treated with the antigen-specific peptide.



AF0349 at 1/100 staining human lymph node tissue sections by IHC-P. The tissue was formaldehyde fixed and a heat mediated antigen retrieval step in citrate buffer was performed. The tissue was then blocked and incubated with the Ab for 1.5 hours at 22°C. An HRP conjugated goat anti-rabbit Ab was used as the secondary.

IMPORTANT: For western blot, incubate membrane with diluted primary Ab

in 5% w/v milk , 1X TBS, 0.1% Tween@20 at 4°C with gentle shaking,
overnight.

For Research Use Only. Not for use in diagnostic and therapeutic
procedures. Not for resale without express authorization.