

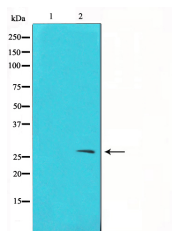
TIMP2 Ab

Cat.#: AF0264
Size: 100ul,200ul

Concn.: 1mg/ml
Source: Rabbit

Mol.Wt.: 24kDa
Clonality: Polyclonal

Application:	WB: 1:500~1:3000 IF/ICC: 1:100~1:500
Reactivity:	Human,Mouse,Rat
Purification:	The antiserum was purified by peptide affinity chromatography using SulfoLink™ Coupling Resin (Thermo Fisher Scientific).
Specificity:	TIMP2 Ab detects endogenous levels of total TIMP2.
Immunogen:	A synthesized peptide derived from human TIMP2.
Uniprot:	P16035
Description:	TIMP2 Complexes with metalloproteinases (such as collagenases) and irreversibly inactivates them by binding to their catalytic zinc cofactor. Known to act on MMP1, MMP2, MMP3, MMP7, MMP8, MMP9, MMP10, MMP13, MMP14, MMP15, MMP16 and MMP19.
Subcellular Location:	Secreted.
Tissue Specificity:	Down-regulated by TGFB1.
Similarity:	Belongs to the protease inhibitor I35 (TIMP) family. [View classification]
Storage Condition and Buffer:	Rabbit IgG in phosphate buffered saline , pH 7.4, 150mM NaCl, 0.02% sodium azide and 50% glycerol.Store at -20 °C.Stable for 12 months from date of receipt.



Western blot analysis on A549 cell lysate using TIMP2 Ab, The lane on the left is treated with the antigen-specific peptide.



AF0264 staining HeLa cells by IF/ICC. The sample were fixed with PFA and permeabilized in 0.1% Triton X-100, then blocked in 10% serum for 45 minutes at 25°C. The primary Ab was diluted at 1/200 and incubated with the sample for 1 hour at 37°C. An Alexa Fluor 594 conjugated goat anti-rabbit IgG (H+L) Ab (Cat.# S0006), diluted at 1/600, was used as secondary Ab.

IMPORTANT: For western blot, incubate membrane with diluted primary Ab in 5% w/v milk, 1X TBS, 0.1% Tween@20 at 4°C with gentle shaking, overnight.

For Research Use Only. Not for use in diagnostic and therapeutic procedures. Not for resale without express authorization.