

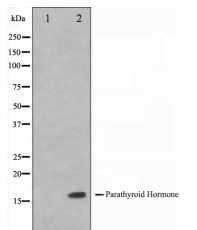
Parathyroid Hormone Ab

Cat.#: AF0234
Size: 100ul, 200ul

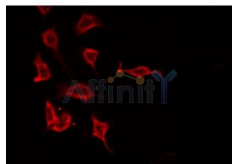
Concn.: 1mg/ml
Source: Rabbit

Mol.Wt.: 16kDa
Clonality: Polyclonal

Application:	WB: 1:500~1:3000, IF/ICC 1:100-1:500
Reactivity:	Human
Purification:	The antiserum was purified by peptide affinity chromatography using SulfoLink™ Coupling Resin (Thermo Fisher Scientific).
Specificity:	Parathyroid Hormone Ab detects endogenous levels of total Parathyroid Hormone.
Immunogen:	A synthesized peptide derived from human Parathyroid Hormone.
Uniprot:	P01270
Description:	PTH PTH elevates calcium level by dissolving the salts in bone and preventing their renal excretion. Belongs to the parathyroid hormone family.
Subcellular Location:	Secreted.
Similarity:	Belongs to the parathyroid hormone family.
Storage Condition and Buffer:	Rabbit IgG in phosphate buffered saline , pH 7.4, 150mM NaCl, 0.02% sodium azide and 50% glycerol. Store at -20 °C. Stable for 12 months from date of receipt.



Western blot analysis on A549 cell lysate using Parathyroid Hormone Ab. The lane on the left is treated with the antigen-specific peptide.



AF0234 staining A549 by IF/ICC. The sample were fixed with PFA and permeabilized in 0.1% Triton X-100, then blocked in 10% serum for 45 minutes at 25°C. The primary Ab was diluted at 1/200 and incubated with the sample for 1 hour at 37°C. An Alexa Fluor 594 conjugated goat anti-rabbit IgG (H+L) Ab, diluted at 1/600, was used as the secondary Ab.

IMPORTANT: For western blot, incubate membrane with diluted primary Ab in 5% w/v milk , 1X TBS, 0.1% Tween@20 at 4°C with gentle shaking, overnight.

For Research Use Only. Not for use in diagnostic and therapeutic procedures. Not for resale without express authorization.