

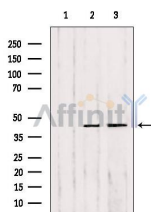
MMP23 Ab

Cat.#: AF0216
Size: 100ul,200ul

Concn.: 1mg/ml
Source: Rabbit

Mol.Wt.: 44kDa
Clonality: Polyclonal

Application:	WB: 1:500~1:3000, IF/ICC 1:100-1:500
Reactivity:	Human,Mouse,Rat
Purification:	The antiserum was purified by peptide affinity chromatography using SulfoLink™ Coupling Resin (Thermo Fisher Scientific).
Specificity:	MMP23 Ab detects endogenous levels of total MMP23.
Immunogen:	A synthesized peptide derived from human MMP23.
Uniprot:	O75900
Description:	MMP23B Protease. Belongs to the peptidase M10A family. 3 isoforms of the human protein are produced by alternative splicing.
Subcellular Location:	Endoplasmic reticulum membrane. Membrane. A secreted form produced by proteolytic cleavage may also exist.
Tissue Specificity:	Predominantly expressed in ovary, testis and prostate.
Similarity:	The ShKT domain associates with, and blocks several potassium channels in the nanomolar to low micromolar range. The relative affinity is Kv1.6 > Kv1.3 > Kv1.1 = Kv3.2 > Kv1.4 (By similarity).Belongs to the peptidase M10A family.
Storage Condition and Buffer:	Rabbit IgG in phosphate buffered saline , pH 7.4, 150mM NaCl, 0.02% sodium azide and 50% glycerol.Store at -20 °C.Stable for 12 months from date of receipt.

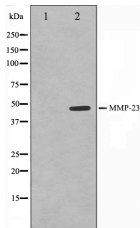


Western blot analysis of extracts from various samples, using MMP23 Ab.

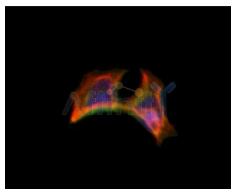
Lane 1: Hela treated with blocking peptide.

Lane 2: Hela;

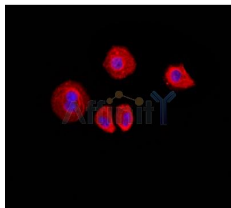
Lane 3: Hepg2;



Western blot analysis on SK-OV3 cell lysate using MMP23 Ab. The lane on the left is treated with the antigen-specific peptide.



AF0216 staining HeLa by IF/ICC. The samples were fixed with PFA and permeabilized in 0.1% Triton X-100, then blocked in 10% serum for 45 minutes at 25°C. Samples were then incubated with primary Ab (AF0216 1:200) and mouse anti-beta tubulin Ab (T0023 1:200) for 1 hour at 37°C. An AlexaFluor594 conjugated goat anti-rabbit IgG (H+L) Ab (S0006 Red 1:600) and an AlexaFluor488 conjugated goat anti-mouse IgG (H+L) Ab (S0017 Green 1:600) were used as the secondary



AF0216 staining HeLa by IF/ICC. The sample were fixed with PFA and permeabilized in 0.1% Triton X-100, then blocked in 10% serum for 45 minutes at 25°C. The primary Ab was diluted at 1/200 and incubated with the sample for 1 hour at 37°C. An Alexa Fluor 594 conjugated goat anti-rabbit IgG (H+L) Ab, diluted at 1/600, was used as the secondary Ab.



AF0216 staining SKOV3 cells by IF/ICC. The sample were fixed with PFA and permeabilized in 0.1% Triton X-100, then blocked in 10% serum for 45 minutes at 25°C. The primary Ab was diluted at 1/200 and incubated with the sample for 1 hour at 37°C. An Alexa Fluor 594 conjugated goat anti-rabbit IgG (H+L) Ab (Cat.# S0006), diluted at 1/600, was used as secondary Ab.

IMPORTANT: For western blot, incubate membrane with diluted primary Ab in 5% w/v milk, 1X TBS, 0.1% Tween@20 at 4°C with gentle shaking, overnight.

For Research Use Only. Not for use in diagnostic and therapeutic procedures. Not for resale without express authorization.