

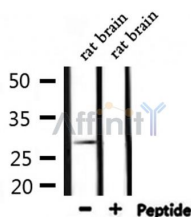
Galectin 3 Ab

Cat.#: AF0164
Size: 100ul,200ul

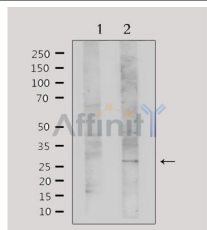
Concn.: 1mg/ml
Source: Rabbit

Mol.Wt.: 27kDa
Clonality: Polyclonal

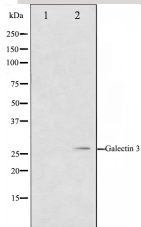
Application:	WB: 1:500~1:3000 IHC: 1:50~1:200 IF/ICC: 1:100~1:500
Reactivity:	Human,Mouse,Rat
Purification:	The antiserum was purified by peptide affinity chromatography using SulfoLink™ Coupling Resin (Thermo Fisher Scientific).
Specificity:	Galectin 3 Ab detects endogenous levels of total Galectin 3.
Immunogen:	A synthesized peptide derived from human Galectin 3.
Uniprot:	P17931
Description:	galectin-3 galactose-specific lectin which binds IgE. Expressed at a high level in the colonic epithelium. Also abundant in activated macrophages.
Subcellular Location:	Nucleus. Cytoplasmic in adenomas and carcinomas. May be secreted by a non-classical secretory pathway and associate with the cell surface.
Tissue Specificity:	A major expression is found in the colonic epithelium. It is also abundant in the activated macrophages. Expressed in fetal membranes.
Storage Condition and Buffer:	Rabbit IgG in phosphate buffered saline , pH 7.4, 150mM NaCl, 0.02% sodium azide and 50% glycerol.Store at -20 °C.Stable for 12 months from date of receipt.



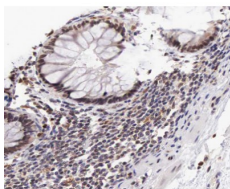
Western blot analysis of extracts from rat brain, using Galectin 3 Ab.



Western blot analysis of extracts from HeLa, using Galectin 3 Ab. Lane 1 was treated with the antigen-specific peptide.



Western blot analysis on HeLa cell lysate using Galectin 3 Ab. The lane on the left is treated with the antigen-specific peptide.



AF0164 at 1/100 staining human colon carcinoma tissue sections by IHC-P. The tissue was formaldehyde fixed and a heat mediated antigen retrieval step in citrate buffer was performed. The tissue was then blocked and incubated with the Ab for 1.5 hours at 22°C. An HRP conjugated goat anti-rabbit Ab was used as the secondary.



AF0164 staining HeLa by IF/ICC. The sample were fixed with PFA and permeabilized in 0.1% Triton X-100, then blocked in 10% serum for 45 minutes at 25°C. The primary Ab was diluted at 1/200 and incubated with the sample for 1 hour at 37°C. An Alexa Fluor 594 conjugated goat anti-rabbit IgG (H+L) Ab, diluted at 1/600, was used as the secondary Ab.



AF0164 staining A-431 cells by IF/ICC. The sample were fixed with PFA and permeabilized in 0.1% Triton X-100, then blocked in 10% serum for 45 minutes at 25°C. The primary Ab was diluted at 1/200 and incubated with the sample for 1 hour at 37°C. An Alexa Fluor 594 conjugated goat anti-rabbit IgG (H+L) Ab (Cat.# S0006), diluted at 1/600, was used as secondary Ab.

IMPORTANT: For western blot, incubate membrane with diluted primary Ab in 5% w/v milk, 1X TBS, 0.1% Tween@20 at 4°C with gentle shaking, overnight.

For Research Use Only. Not for use in diagnostic and therapeutic procedures. Not for resale without express authorization.