

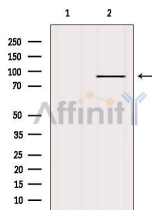
FGFR2 Ab

Cat.#: AF0159
Size: 100ul,200ul

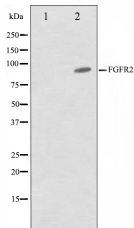
Concn.: 1mg/ml
Source: Rabbit

Mol.Wt.: 92kDa
Clonality: Polyclonal

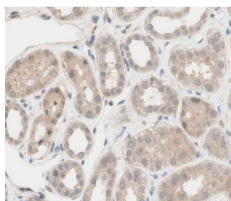
Application:	WB: 1:500~1:3000 IHC: 1:50~1:200
Reactivity:	Human,Mouse,Rat
Purification:	The antiserum was purified by peptide affinity chromatography using SulfoLink™ Coupling Resin (Thermo Fisher Scientific).
Specificity:	FGFR2 Ab detects endogenous levels of total FGFR2.
Immunogen:	A synthesized peptide derived from human FGFR2.
Uniprot:	P21802
Description:	FGFR2 a receptor tyrosine kinase of the highly-conserved FGFR family that binds fibroblast growth factor (FGF). Mutations are associated with many craniosynostotic syndromes and bone malformations. Mutations cause syndromes with defects in facial and limb development, including Crouzon syndrome, Beare-Stevenson cutis gyrata syndrome, Pfeiffer syndrome, Apert syndrome, and Jackson-Weiss syndrome. Somatic mutations seen in gastric cancer. Amplified in gastric, breast and some B cell cancers, but deleted in glioblastoma Twenty splice-variant isoforms have been described. Note: This description may include information from UniProtKB.
Subcellular Location:	Secreted and Cell membrane.
Similarity:	The second and third Ig-like domains directly interact with fibroblast growth factors (FGF) and heparan sulfate proteoglycans. Alternative splicing events affecting the third Ig-like domain are crucial for ligand selectivity.Belongs to the protein kinase superfamily. Tyr protein kinase family. Fibroblast growth factor receptor subfamily.
Storage Condition and Buffer:	Rabbit IgG in phosphate buffered saline , pH 7.4, 150mM NaCl, 0.02% sodium azide and 50% glycerol.Store at -20 °C.Stable for 12 months from date of receipt.



Western blot analysis of extracts from HepG2, using FGFR2 Ab. Lane 1 was treated with the blocking peptide.



Western blot analysis on A549 cell lysate using FGFR2 Ab. The lane on the left is treated with the antigen-specific peptide.



AF0159 at 1/100 staining human kidney tissue sections by IHC-P. The tissue was formaldehyde fixed and a heat mediated antigen retrieval step in citrate buffer was performed. The tissue was then blocked and incubated with the Ab for 1.5 hours at 22°C. An HRP conjugated goat anti-rabbit Ab was used as the secondary.

IMPORTANT: For western blot, incubate membrane with diluted primary Ab in 5% w/v milk, 1X TBS, 0.1% Tween@20 at 4°C with gentle shaking, overnight.

For Research Use Only. Not for use in diagnostic and therapeutic procedures. Not for resale without express authorization.