

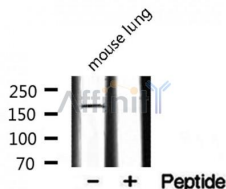
RON Ab

Cat.#: AF0111
Size: 100ul,200ul

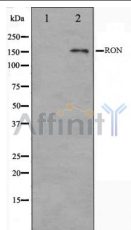
Concn.: 1mg/ml
Source: Rabbit

Mol.Wt.: 152kDa
Clonality: Polyclonal

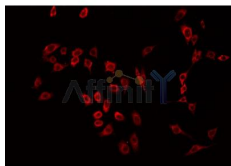
Application:	WB: 1:500~1:3000, IF/ICC 1:100-1:500
Reactivity:	Human,Mouse
Purification:	The antiserum was purified by peptide affinity chromatography using SulfoLink™ Coupling Resin (Thermo Fisher Scientific).
Specificity:	RON Ab detects endogenous levels of total RON.
Immunogen:	A synthesized peptide derived from human RON.
Uniprot:	Q04912
Description:	Ron a receptor tyrosine kinase of the Met family. Receptor for macrophage stimulating protein. Can be desensitized by c-Cbl and its binding partner Grb2. Overexpression of wild-type RON causes the formation of lung tumors. Two alternatively spliced isoforms have been described
Subcellular Location:	Membrane.
Tissue Specificity:	Expressed in colon, skin, lung and bone marrow.
Similarity:	Belongs to the protein kinase superfamily. Tyr protein kinase family.
Storage Condition and Buffer:	Rabbit IgG in phosphate buffered saline , pH 7.4, 150mM NaCl, 0.02% sodium azide and 50% glycerol.Store at -20 °C.Stable for 12 months from date of receipt.



Western blot analysis on mouse lung lysate using RON Ab. The lane on the right is treated with the antigen-specific peptide.



Western blot analysis on HeLa cell lysate using RON Ab. The lane on the left is treated with the antigen-specific peptide.



AF0111 staining HeLa by IF/ICC. The sample were fixed with PFA and permeabilized in 0.1% Triton X-100, then blocked in 10% serum for 45 minutes at 25°C. The primary Ab was diluted at 1/200 and incubated with the sample for 1 hour at 37°C. An Alexa Fluor 594 conjugated goat anti-rabbit IgG (H+L) Ab, diluted at 1/600, was used as the secondary Ab.

IMPORTANT: For western blot, incubate membrane with diluted primary Ab in 5% w/v milk, 1X TBS, 0.1% Tween@20 at 4°C with gentle shaking, overnight.

For Research Use Only. Not for use in diagnostic and therapeutic procedures. Not for resale without express authorization.