

Anti-Human IL-8 Secondary Antibody

Rabbit Polyclonal, Unconjugated

Catalog # ASR3289

Specification

Anti-Human IL-8 Secondary Antibody - Product Information

Description	Anti-Human IL-8 (RABBIT) Antibody
Host	Rabbit
Conjugate	Unconjugated
Target Species	Human
Reactivity	Human
Clonality	Polyclonal
Application	,1,5,10,15,
Application Note	ELISA 1:1,000-1:5,000;Western Blot 1:500-1:2,000;Immunocytochemistry 1:400-1:800Immuno Precipitation:1:400-1:800
Physical State	Liquid (sterile filtered)
Host Isotype	Antiserum
Buffer	None
Immunogen	The whole rabbit serum was prepared by repeated immunizations with recombinant human IL-8 produced in E.coli.
Stabilizer	None
Preservative	None

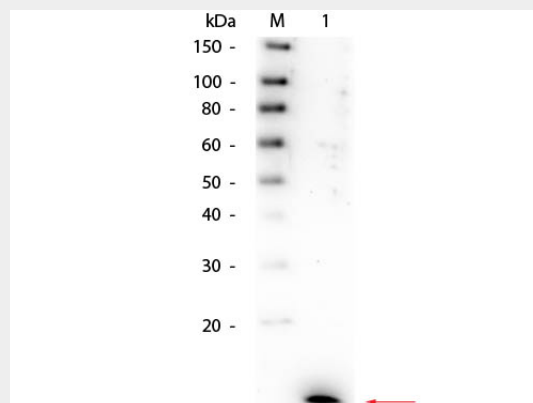
Anti-Human IL-8 Secondary Antibody - Additional Information

Shipping Condition

Dry Ice

Purity

Anti-IL 8 antiserum has been heated to 56°C for 30 minutes. The antiserum detects recombinant and native IL-8 present in body fluids and cell supernatants in ELISA. Although likely to be functional,



Western Blot of Rabbit anti-Human IL-8 Antibody. Lane 1: Recombinant Human IL-8. Load: 50 ng per lane. Primary antibody: Rabbit anti-Human IL-8 Antibody 1:1,000 overnight at 4°C. Secondary antibody: HRP Goat-a-rabbit secondary antibody at 1:40,000 for 30 min at RT. Block: MB-070 for 30 min at RT. Predicted/Observed size: 11 kDa, 11 kDa for Human IL-8.

Anti-Human IL-8 Secondary Antibody - Background

Interleukin-8 is a chemokine produced by macrophages and other cell types such as epithelial cells. Human IL-8 (CXCL8) antibody is commonly used in many experiments focused around inflammation. Anti-IL-8 antibody is ideal for investigators involved in Cancer, Immunology and Cardiovascular research.

this antiserum has not been evaluated in other assays, including neutralization and immunohistochemistry.

Storage Condition

Store anti-IL8 antibody at -20° C prior to opening. Aliquot contents and freeze at -20° C or below for extended storage. Avoid cycles of freezing and thawing. Centrifuge product if not completely clear after standing at room temperature. This product is stable for several weeks at 4° C as an undiluted liquid. Dilute only prior to immediate use.

Precautions Note

This product is for research use only and is not intended for therapeutic or diagnostic applications.

Anti-Human IL-8 Secondary Antibody - Protein Information**Anti-Human IL-8 Secondary Antibody - Protocols**

Provided below are standard protocols that you may find useful for product applications.

- [Western Blot](#)
- [Blocking Peptides](#)
- [Dot Blot](#)
- [Immunohistochemistry](#)
- [Immunofluorescence](#)
- [Immunoprecipitation](#)
- [Flow Cytometry](#)
- [Cell Culture](#)