

CD30 Antibody
Rabbit Monoclonal Antibody (Mab)
Catalog # AD80420

Specification

CD30 Antibody - Product info

Application	IHC
Primary Accession	P28908
Reactivity	Human
Host	Rabbit
Clonality	Monoclonal
Isotype	IgG
Calculated MW	63747

CD30 Antibody - Additional info

Gene ID	943
Gene Name	TNFRSF8 (HGNC:11923)

Other Names

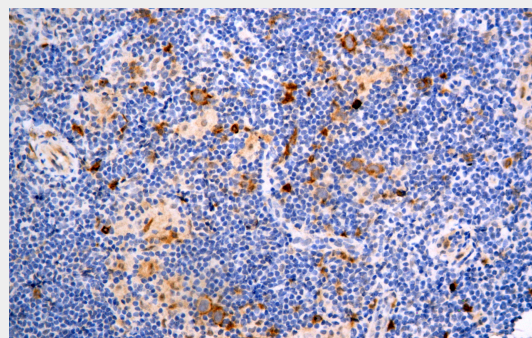
Tumor necrosis factor receptor superfamily member 8
{ECO:0000312|HGNC:HGNC:11923}, CD30L receptor, Ki-1 antigen, Lymphocyte activation antigen CD30, CD30, TNFRSF8
(HGNC:11923)

Dilution

IHC~~Ready-to-use

Storage	Maintain refrigerated at 2-8°C for up to 2 weeks. For long term storage store at -20°C in small aliquots to prevent freeze-thaw cycles.
Precautions	CD30 Antibody is for research use only and not for use in diagnostic or therapeutic procedures.

CD30 Antibody - Protein Information



Immunohistochemical analysis of paraffin-embedded hodgkin lymphoma tissue using AD80420 performed on the Abcarta® FAIP-30 Fully automated IHC platform. Tissue was fixed with formaldehyde at room temperature, antigen retrieval was by heat mediation with a EDTA buffer (pH9.0). Samples were incubated with primary antibody (Ready-to-use) for 15 min at room temperature. AmpSee™ Detection Systems□Abcepta:AR005□ was used as the secondary antibody.

Name TNFRSF8 ([HGNC:11923](#))

Function	Receptor for TNFSF8/CD30L. May play a role in the regulation of cellular growth and transformation of activated lymphoblasts. Regulates gene expression through activation of NF-kappa-B.
Cellular Location	Isoform 1: Cell membrane; Single-pass type I membrane protein

CD30 Antibody - Protocols

Provided below are standard protocols that you may find useful for product applications.

- [Western Blot](#)
- [Blocking Peptides](#)
- [Dot Blot](#)
- [Immunohistochemistry](#)
- [Immunofluorescence](#)
- [Immunoprecipitation](#)
- [Flow Cytometry](#)
- [Cell Culture](#)