

CD10 Antibody
Mouse Monoclonal Antibody (Mab)
Catalog # AD80166

Specification

CD10 Antibody - Product info

Application	IHC
Primary Accession	P08473
Reactivity	Human
Host	Mouse
Clonality	Monoclonal
Isotype	IgG1
Calculated MW	85514

CD10 Antibody - Additional info

Gene ID	4311
Gene Name	MME
Other Names	
Neprilysin, 3.4.24.11, Atriopeptidase, Common acute lymphocytic leukemia antigen, CALLA, Enkephalinase, Neutral endopeptidase 24.11, NEP, Neutral endopeptidase, Skin fibroblast elastase, SFE, CD10, MME, EPN	

Dilution

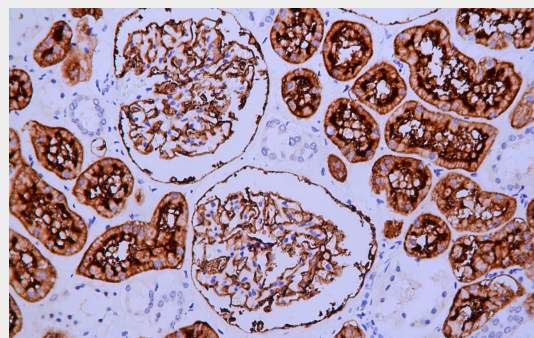
IHC~~Ready-to-use

Storage

Maintain refrigerated at 2-8°C for up to 2 weeks. For long term storage store at -20°C in small aliquots to prevent freeze-thaw cycles.

Precautions

CD10 Antibody is for research use only and not for use in diagnostic or therapeutic procedures.



Immunohistochemical analysis of paraffin-embedded human kidney tissue using AD80166 performed on the Abcarta® FAIP-30 Fully automated IHC platform. Tissue was fixed with formaldehyde at room temperature, antigen retrieval was by heat mediation with a EDTA buffer (pH9.0). Samples were incubated with primary antibody (Ready-to-use) for 15 min at room temperature. AmpSee™ Detection Systems□Abcepta:AR005□ was used as the secondary antibody.

CD10 Antibody - Protein Information

Name MME

Synonyms
Function**EPN**

Thermolysin-like specificity, but is almost confined on acting on polypeptides of up to 30 amino acids (PubMed: [15283675](#), PubMed: [8168535](#)). **Biologically important in the destruction of opioid peptides such as Met- and Leu-enkephalins by cleavage of a Gly-Phe bond** (PubMed: [17101991](#)). **Able to cleave angiotensin-1, angiotensin-2 and angiotensin 1-9** (PubMed: [15283675](#)). **Involved in the degradation of atrial natriuretic factor (ANF)** (PubMed: [2531377](#), PubMed: [2972276](#)). **Displays UV-inducible elastase activity toward skin preelastic and elastic fibers** (PubMed: [20876573](#)). **Cell membrane; Single-pass type II membrane protein**

Cellular Location**CD10 Antibody - Protocols**

Provided below are standard protocols that you may find useful for product applications.

- [Western Blot](#)
- [Blocking Peptides](#)
- [Dot Blot](#)
- [Immunohistochemistry](#)
- [Immunofluorescence](#)

- [Immunoprecipitation](#)
- [Flow Cytometry](#)
- [Cell Culture](#)