

FSH Antibody
Mouse Monoclonal Antibody (Mab)
Catalog # AD80165

Specification

FSH Antibody - Product info

Application	IHC
Primary Accession	P23945
Reactivity	Human
Host	Mouse
Clonality	Monoclonal
Isotype	IgG1
Calculated MW	78265

FSH Antibody - Additional info

Gene ID	2492
Gene Name	FSHR
Other Names	
Follicle-stimulating hormone receptor, FSH-R, Follitropin receptor, FSHR, LGR1	

Dilution

IHC~~Ready-to-use

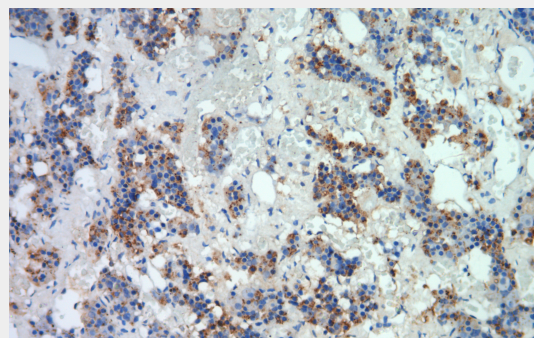
Storage	Maintain refrigerated at 2-8°C for up to 2 weeks. For long term storage store at -20°C in small aliquots to prevent freeze-thaw cycles.
---------	--

Precautions	FSH Antibody is for research use only and not for use in diagnostic or therapeutic procedures.
-------------	---

FSH Antibody - Protein Information

Name FSHR

Synonyms	LGR1
Function	G protein-coupled receptor for



Immunohistochemical analysis of paraffin-embedded human pituitary tissue using AD80165 performed on the Abcarta® FAIP-30 Fully automated IHC platform. Tissue was fixed with formaldehyde at room temperature, antigen retrieval was by heat mediation with a Citrate buffer (pH6.0). Samples were incubated with primary antibody (Ready-to-use) for 15 min at room temperature. AmpSee™ Detection Systems (Abcepta:AR005) was used as the secondary antibody.

	follitropin, the follicle-stimulating hormone (PubMed d:11847099, PubMed:24058690, PubMed:24692546). Through cAMP production activates the downstream PI3K-AKT and ERK1/ERK2 signaling pathways (PubMed d:24058690).
Cellular Location	Cell membrane; Multi-pass membrane protein
Tissue Location	Sertoli cells and ovarian granulosa cells.

FSH Antibody - Protocols

Provided below are standard protocols that you may find useful for product applications.

- [Western Blot](#)
- [Blocking Peptides](#)
- [Dot Blot](#)
- [Immunohistochemistry](#)
- [Immunofluorescence](#)
- [Immunoprecipitation](#)
- [Flow Cytometry](#)
- [Cell Culture](#)