

CK14 Antibody
Mouse Monoclonal Antibody (Mab)
Catalog # AD80138

Specification

CK14 Antibody - Product info

Application	IHC
Primary Accession	P02533
Reactivity	Human
Host	Mouse
Clonality	Monoclonal
Isotype	IgG3
Calculated MW	51561

CK14 Antibody - Additional info

Gene ID	3861
Gene Name	KRT14
Other Names	
Keratin, type I cytoskeletal 14, Cytokeratin-14, CK-14, Keratin-14, K14, KRT14	

Dilution

IHC~~Ready-to-use

Storage

Maintain refrigerated at 2-8°C for up to 2 weeks. For long term storage store at -20°C in small aliquots to prevent freeze-thaw cycles.

Precautions

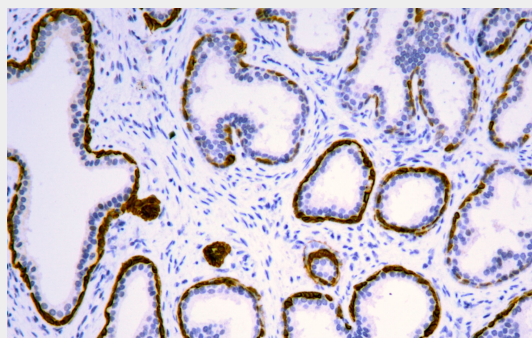
CK14 Antibody is for research use only and not for use in diagnostic or therapeutic procedures.

CK14 Antibody - Protein Information

Name KRT14

Function

The nonhelical tail domain is involved in



Immunohistochemical analysis of paraffin-embedded prostatic cancer tissue using AD80138 performed on the Abcarta® FAIP-30 Fully automated IHC platform. Tissue was fixed with formaldehyde at room temperature, antigen retrieval was by heat mediation with a Citrate buffer (pH6.0). Samples were incubated with primary antibody (Ready-to-use) for 15 min at room temperature. AmpSee™ Detection Systems [Abcepta:AR005] was used as the secondary antibody.

Cellular Location	<p>promoting KRT5-KRT14 filaments to self-organize into large bundles and enhances the mechanical properties involved in resilience of keratin intermediate filaments in vitro.</p> <p>Cytoplasm. Nucleus. Note=Expressed in both as a filamentous pattern</p>
Tissue Location	<p>Detected in the basal layer, lowered within the more apically located layers specifically in the stratum spinosum, stratum granulosum but is not detected in stratum corneum. Strongly expressed in the outer root sheath of anagen follicles but not in the germinative matrix, inner root sheath or hair. Found in keratinocytes surrounding the club hair during telogen.</p>

CK14 Antibody - Protocols

Provided below are standard protocols that you may find useful for product applications.

- [Western Blot](#)
- [Blocking Peptides](#)
- [Dot Blot](#)
- [Immunohistochemistry](#)
- [Immunofluorescence](#)

- [Immunoprecipitation](#)
- [Flow Cytometry](#)
- [Cell Culture](#)