

**Synaptophysin Antibody**  
**Mouse Monoclonal Antibody (Mab)**  
**Catalog # AD80038**

**Specification**

**Synaptophysin Antibody - Product info**

Application	<b>IHC</b>
Primary Accession	<a href="#">P08247</a>
Reactivity	<b>Human</b>
Host	<b>Mouse</b>
Clonality	<b>Monoclonal</b>
Isotype	<b>IgG1</b>
Calculated MW	<b>33845</b>

**Synaptophysin Antibody - Additional info**

Gene ID	<b>6855</b>
Gene Name	<b>SYP</b>
<b>Other Names</b>	
Synaptophysin, Major synaptic vesicle protein p38, SYP	

**Dilution**

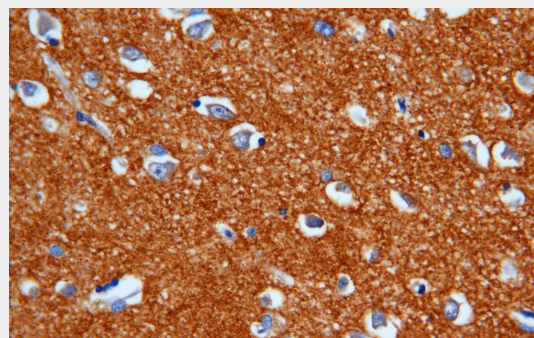
IHC~~Ready-to-use

**Storage**

**Maintain refrigerated at 2-8°C for up to 2 weeks. For long term storage store at -20°C in small aliquots to prevent freeze-thaw cycles.**

**Precautions**

**Synaptophysin Antibody is for research use only and not for use in diagnostic or therapeutic procedures.**



Immunohistochemical analysis of paraffin-embedded O tissue using AD80282 performed on the Abcarta® FAIP-30 Fully automated IHC platform. Tissue was fixed with formaldehyde at room temperature, antigen retrieval was by heat mediation with a Citrate buffer (pH6. 0). Samples were incubated with primary antibody (Ready-to-use) for 15 min at room temperature. AmpSee™ Detection Systems□Abcepta:AR005□ was used as the secondary antibody.

**Synaptophysin Antibody - Protein Information**

**Name** SYP

**Function**

**Possibly involved in structural functions as**

	<b>organizing other membrane components or in targeting the vesicles to the plasma membrane. Involved in the regulation of short-term and long-term synaptic plasticity (By similarity). Cytoplasmic vesicle, secretory vesicle, synaptic vesicle membrane; Multi-pass membrane protein. Cell junction, synapse, synaptosome</b>
Cellular Location	
Tissue Location	<b>Expressed in the brain, with expression in the hippocampus, the neuropil in the dentate gyrus, where expression is higher in the outer half of the molecular layer than in the inner half, and in the neuropil of CA4 and CA3</b>

### **Synaptophysin Antibody - Protocols**

Provided below are standard protocols that you may find useful for product applications.

- [Western Blot](#)
- [Blocking Peptides](#)
- [Dot Blot](#)
- [Immunohistochemistry](#)
- [Immunofluorescence](#)
- [Immunoprecipitation](#)
- [Flow Cytometry](#)
- [Cell Culture](#)