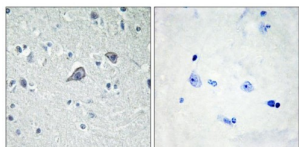


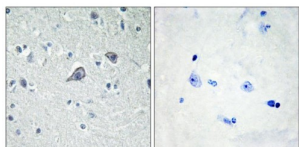
Abbexa Ltd, Innovation Centre, Cambridge Science Park, Cambridge, CB4 0EY, UK
Telephone: +44 (0) 1223 755950 - Fax: +44 (0) 1223 755951 - E-Mail: info@abbexa.com

Adenosine A2a Receptor (ADORA2A) Antibody

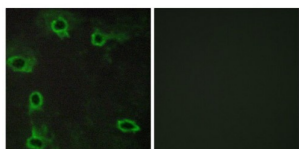
Catalogue No.: abx249472



WB analysis of extracts from COS7 cells, using ADORA2A Antibody. The picture on the right is blocked with the synthesised peptide.



IHC analysis of paraffin-embedded human brain tissue, using ADORA2A Antibody. The picture on the right is blocked with the synthesised peptide.



IF analysis of COS7 cells, using ADORA2A Antibody. The picture on the right is blocked with the synthesised peptide.

ADORA2A Antibody is a Rabbit Polyclonal against ADORA2A.

Target: ADORA2A

Reactivity: Human

Host: Rabbit

Clonality: Polyclonal

Tested Applications: ELISA, WB, IHC, IF/ICC

Recommended dilutions: ELISA: 1/1000, WB: 1/500 - 1/3000, IHC: 1/50 - 1/100, IF/ICC: 1/100 - 1/500. Optimal dilutions/concentrations should be determined by the end user.

Immunogen: The antiserum was produced against a synthesised peptide derived from the internal region of human ADORA2A.

Abbexa Ltd, Innovation Centre, Cambridge Science Park, Cambridge, CB4 0EY, UK
Telephone: +44 (0) 1223 755950 - Fax: +44 (0) 1223 755951 - E-Mail: info@abbexa.com

Purification:	Purified from rabbit antiserum by affinity chromatography using epitope-specific immunogen.
Form:	Liquid
Isotype:	IgG
Conjugation:	Unconjugated
Specificity:	Detects endogenous levels of total ADORA2A protein.
Storage:	Aliquot and store at -20 °C. Avoid repeated freeze/thaw cycles.
Swiss Prot:	<u>P29274</u>
Concentration:	1 mg/ml
Buffer:	PBS (without Mg ²⁺ and Ca ²⁺), pH 7.4, 150 mM NaCl, 0.02% sodium azide, 50% glycerol.
Note:	This product is for research use only.