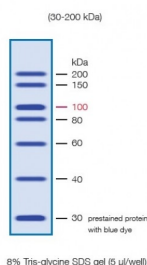


Abbexa Ltd, Innovation Centre, Cambridge Science Park, Cambridge, CB4 0EY, UK
Telephone: +44 (0) 1223 755950 - Fax: +44 (0) 1223 755951 - E-Mail: info@abbexa.com

30-200 kDa Protein Marker

Catalogue No.: abx098115

Protein Marker abx098115



8% Tris-glycine SDS gel (5 µl/well)

30-200 kDa Protein Marker. Protein Marker IV is composed of six unstained recombinant proteins 40 kDa, 60 kDa, 80 kDa, 100 kDa, 150 kDa, 200 kDa and one blue prestained recombinant protein 30 kDa. Prestained protein is obvious to monitor electrophoresis. 100 kDa band is a double intensity band for convenient identification of protein molecular weight. MW range from 30 kDa to 200 kDa. Ready-to-use format, no heating and reductant are required.

Target: 30-200 kDa Protein Marker

Storage: Store at -20°C. Stable for up to 2 years from date of receipt.

Buffer: 50 mM Tris-HCl, pH 6.8, 5 mM EDTA, 10 mM DTT, 10% glycerol, 1% SDS, 0.01% phenol red.

Directions for use: Mix well before use. Use 5 µl/well for small gels or 10 µl/well for larger gels.

Note: This product is for research use only.