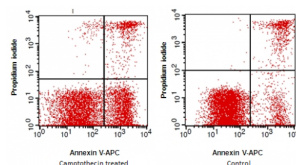


Abbexa Ltd, Innovation Centre, Cambridge Science Park, Cambridge, CB4 0EY, UK
Telephone: +44 (0) 1223 755950 - Fax: +44 (0) 1223 755951 - E-Mail: info@abbexa.com

Annexin V (APC) / PI Apoptosis Detection Kit (APC)

Catalogue No.: abx090605



Annexin V is used as a probe to detect cells that have expressed phosphatidylserine (PS) on the cell surface, an event found in apoptosis as well as other forms of cell death. The Annexin V affinity assay typically uses a conjugate of annexin V and a fluorescent or enzymatic label, biotin or other tags, or a radioelement, in a suitable buffer (annexin V binding to PS is Ca^{2+} dependent). The assay combines annexin V staining of PS membrane events with the staining of cell nucleus with PI or AAD-7 in living cells to distinguish from dead cells. Annexin V Apoptosis Detection Kit (APC) is based on the observation that soon after initiating apoptosis, cells translocate the membrane phosphatidylserine (PS) from the inner face of the plasma membrane to the cell surface. Once on the cell surface, PS can be easily detected by staining with a fluorescent conjugate of Annexin V, a protein that has a high affinity for PS. Detection can be analyzed by flow cytometry or by fluorescence microscopy.

Target:	Annexin V
Reactivity:	General
Conjugation:	APC
Note:	This product is for research use only.