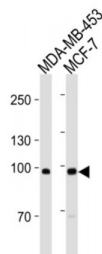


Abbexa Ltd, Innovation Centre, Cambridge Science Park, Cambridge, CB4 0EY, UK
Telephone: +44 (0) 1223 755950 - Fax: +44 (0) 1223 755951 - E-Mail: info@abbexa.com

Angiotensin I Converting Enzyme 2 (ACE2) Antibody

Catalogue No.: abx034955



Carboxypeptidase which converts angiotensin I to angiotensin 1-9, a peptide of unknown function, and angiotensin II to angiotensin 1-7, a vasodilator. Also able to hydrolyze apelin-13 and dynorphin-13 with high efficiency. May be an important regulator of heart function. In case of human coronaviruses SARS and HCoV-NL63 infections, serve as functional receptor for the spike glycoprotein of both coronaviruses. This antibody is supplied as crude ascites.

Target: ACE2

Reactivity: Human

Host: Mouse

Clonality: Monoclonal

Tested Applications: WB

Recommended dilutions: Optimal dilutions/concentrations should be determined by the end user.

Immunogen: Human ACE2.

Purification: Mouse Monoclonal Antibody (Mab) supplied as crude ascites.

Isotype: IgM

Conjugation: Unconjugated

Specificity: Purified His-tagged ACE2 protein was used to produced this monoclonal antibody.

Storage: Aliquot and store at -20 °C. Avoid repeated freeze/thaw cycles.

Swiss Prot: [Q9BYF1](#)

NCBI Accession: NP_068576.1

Abbexa Ltd, Innovation Centre, Cambridge Science Park, Cambridge, CB4 0EY, UK
Telephone: +44 (0) 1223 755950 - Fax: +44 (0) 1223 755951 - E-Mail: info@abbexa.com

Buffer: Mouse monoclonal antibody supplied in crude ascites with 0.09% (W/V) sodium azide.

Note: This product is for research use only.