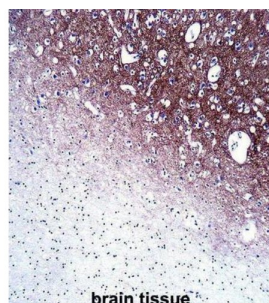


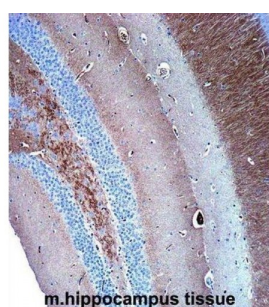
Abbexa Ltd, Innovation Centre, Cambridge Science Park, Cambridge, CB4 0EY, UK
Telephone: +44 (0) 1223 755950 - Fax: +44 (0) 1223 755951 - E-Mail: info@abbexa.com

Synaptophysin (SYP) Antibody

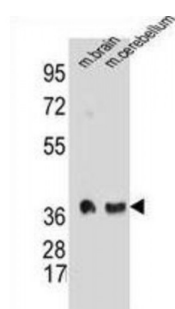
Catalogue No.: abx034614



brain tissue



m. hippocampus tissue



Synaptophysin (p38) is an integral membrane protein of small synaptic vesicles in brain and endocrine cells.[supplied by OMIM].

Target:	SYP
Reactivity:	Human, Mouse
Host:	Rabbit
Clonality:	Polyclonal
Tested Applications:	WB, IHC, IF/ICC, FCM
Recommended dilutions:	Optimal dilutions/concentrations should be determined by the end user.
Immunogen:	Human SYP.

Abbexa Ltd, Innovation Centre, Cambridge Science Park, Cambridge, CB4 0EY, UK
Telephone: +44 (0) 1223 755950 - Fax: +44 (0) 1223 755951 - E-Mail: info@abbexa.com

Purification:	Peptide Affinity Purified Rabbit Polyclonal Antibody.
Isotype:	IgG
Conjugation:	Unconjugated
Specificity:	This SYP antibody is generated from rabbits immunized with a KLH conjugated synthetic peptide between 225-253 amino acids from the C-terminal region of human SYP.
Storage:	Aliquot and store at -20 °C. Avoid repeated freeze/thaw cycles.
Swiss Prot:	P08247
Buffer:	PBS with 0.09% (W/V) sodium azide. This antibody is purified through a protein A column, followed by peptide affinity purification.
Note:	This product is for research use only.