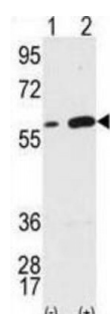
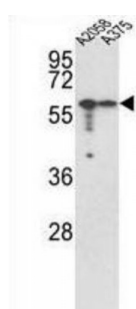
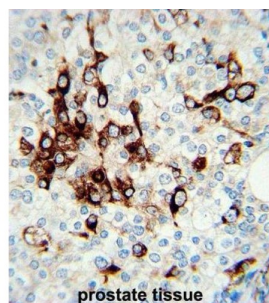


Abbexa Ltd, Innovation Centre, Cambridge Science Park, Cambridge, CB4 0EY, UK
Telephone: +44 (0) 1223 755950 - Fax: +44 (0) 1223 755951 - E-Mail: info@abbexa.com

Vimentin (VIM) Antibody

Catalogue No.: abx031678



Along with the microfilaments (actins) and microtubules (tubulins), the intermediate filaments represent a third class of well-characterized cytoskeletal elements. The subunits display a tissue-specific pattern of expression. Desmin (MIM 125660) is the subunit specific for muscle and vimentin the subunit specific for mesenchymal tissue.

Target: Vimentin

Reactivity: Human

Host: Rabbit

Clonality: Polyclonal

Tested Applications: WB, IHC, FCM

Recommended dilutions: Optimal dilutions/concentrations should be determined by the end user.

Abbexa Ltd, Innovation Centre, Cambridge Science Park, Cambridge, CB4 0EY, UK
Telephone: +44 (0) 1223 755950 - Fax: +44 (0) 1223 755951 - E-Mail: info@abbexa.com

| | |
|----------------------|---|
| Immunogen: | Human Vimentin. |
| Purification: | Purified Rabbit Polyclonal Antibody. |
| Isotype: | IgG |
| Conjugation: | Unconjugated |
| Specificity: | This Vimentin antibody is generated from rabbits immunized with a KLH conjugated synthetic peptide between 152-181 amino acids from the Central region of human Vimentin. |
| Storage: | Aliquot and store at -20 °C. Avoid repeated freeze/thaw cycles. |
| Swiss Prot: | <u>P08670</u> |
| Buffer: | PBS with 0.09% (W/V) sodium azide. This antibody is prepared by Saturated Ammonium Sulfate (SAS) precipitation followed by dialysis against PBS. |
| Note: | This product is for research use only. |