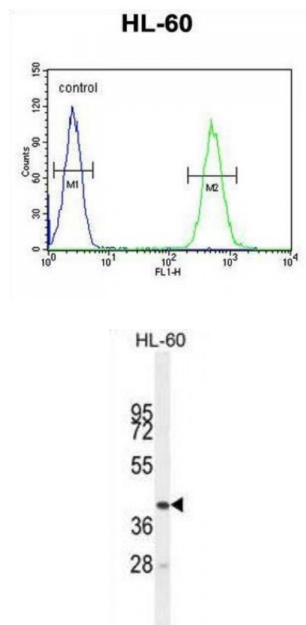


Abbexa Ltd, Innovation Centre, Cambridge Science Park, Cambridge, CB4 0EY, UK
Telephone: +44 (0) 1223 755950 - Fax: +44 (0) 1223 755951 - E-Mail: info@abbexa.com

Butyrophilin-Like Protein 3 (BTNL3) Antibody

Catalogue No.: abx025978



BTNL3 is expressed in small intestine, colon, testis, spleen, and leukocyte and plays a role in lipid metabolism. Two isoforms have been described.

Target: BTNL3

Reactivity: Human

Host: Rabbit

Clonality: Polyclonal

Tested Applications: WB, FCM

Recommended dilutions: Optimal dilutions/concentrations should be determined by the end user.

Immunogen: Human BTNL3.

Purification: Peptide Affinity Purified Rabbit Polyclonal Antibody.

Isotype: IgG

Conjugation: Unconjugated

Abbexa Ltd, Innovation Centre, Cambridge Science Park, Cambridge, CB4 0EY, UK
Telephone: +44 (0) 1223 755950 - Fax: +44 (0) 1223 755951 - E-Mail: info@abbexa.com

Specificity:	This BTNL3 antibody is generated from rabbits immunized with a KLH conjugated synthetic peptide between 427-455 amino acids from the C-terminal region of human BTNL3.
Storage:	Aliquot and store at -20 °C. Avoid repeated freeze/thaw cycles.
Swiss Prot:	<u>Q6UXE8</u>
Gene Symbol:	BTNL3
Buffer:	PBS with 0.09% (W/V) sodium azide. This antibody is purified through a protein A column, followed by peptide affinity purification.
Note:	This product is for research use only.