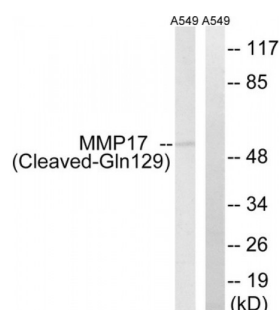


Abbexa Ltd, Innovation Centre, Cambridge Science Park, Cambridge, CB4 0EY, UK
Telephone: +44 (0) 1223 755950 - Fax: +44 (0) 1223 755951 - E-Mail: info@abbexa.com

Matrix Metalloproteinase-17 (MMP17) Antibody

Catalogue No.: abx015606



Western blot analysis of extracts from A549 cells, treated with etoposide (25uM, 1hour), using MMP17 (Cleaved-Gln129) antibody.

Rabbit polyclonal antibody against MMP17 protein. Immunogen region is Internal. Specificity is as follows for the reactive species: H:Q129.

Target:	Matrix Metalloproteinase 17 (MMP17)
Reactivity:	Human
Host:	Rabbit
Clonality:	Polyclonal
Tested Applications:	ELISA, WB
Recommended dilutions:	WB: 1/500 - 1/3000, ELISA: 1/10000. Optimal dilutions/concentrations should be determined by the end user.
Immunogen:	The antiserum was produced against synthesized peptide derived from internal of human MMP17.
Purification:	Purified from rabbit antiserum by affinity chromatography using epitope-specific immunogen.
Form:	Liquid
Isotype:	IgG
Conjugation:	Unconjugated
Specificity:	MMP17 (Cleaved-Gln129) antibody detects endogenous levels of fragment of activated MMP17 resulting from cleavage adjacent to Gln129.
Storage:	Aliquot and store at -20 °C. Avoid repeated freeze/thaw cycles.
Swiss Prot:	Q9ULZ9

Abbexa Ltd, Innovation Centre, Cambridge Science Park, Cambridge, CB4 0EY, UK
Telephone: +44 (0) 1223 755950 - Fax: +44 (0) 1223 755951 - E-Mail: info@abbexa.com

Enzyme Commission Number: EC 3.4.24.-

Buffer: PBS (without Mg^{2+} and Ca^{2+}), pH 7.4, 150 mM NaCl, 0.02% sodium azide, 50% glycerol.

Note: This product is for research use only.