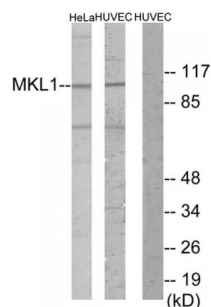


Abbexa Ltd, Innovation Centre, Cambridge Science Park, Cambridge, CB4 0EY, UK
Telephone: +44 (0) 1223 755950 - Fax: +44 (0) 1223 755951 - E-Mail: info@abbexa.com

Megakaryocytic Acute Leukemia Protein (MKL1) Antibody

Catalogue No.: abx013747



Western blot analysis of extracts from HeLa cells and HUVEC cells, using MKL1 antibody.

Rabbit polyclonal antibody against MKL1 protein. Immunogen region is N-terminal.

Target: MKL1

Reactivity: Human, Mouse

Host: Rabbit

Clonality: Polyclonal

Tested Applications: ELISA, WB

Recommended dilutions: WB: 1/500 - 1/3000, ELISA: 1/1000. Optimal dilutions/concentrations should be determined by the end user.

Immunogen: The antiserum was produced against synthesized peptide derived from N-terminal of human MKL1.

Purification: Purified from rabbit antiserum by affinity chromatography using epitope-specific immunogen.

Form: Liquid

Isotype: IgG

Conjugation: Unconjugated

Storage: Aliquot and store at -20 °C. Avoid repeated freeze/thaw cycles.

Swiss Prot: [Q969V6](#)

Buffer: PBS (without Mg^{2+} and Ca^{2+}), pH 7.4, 150 mM NaCl, 0.02% sodium azide, 50% glycerol.

Note: This product is for research use only.