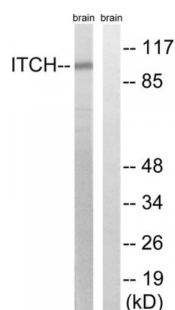


Abbexa Ltd, Innovation Centre, Cambridge Science Park, Cambridge, CB4 0EY, UK
Telephone: +44 (0) 1223 755950 - Fax: +44 (0) 1223 755951 - E-Mail: info@abbexa.com

Itchy E3 Ubiquitin Protein Ligase (ITCH) Antibody

Catalogue No.: abx012956



Western blot analysis of extracts from mouse brain cells, using ITCH (epitope around residue 420) antibody.

Rabbit polyclonal antibody against ITCH protein. Immunogen region is Internal.

| | |
|----------------------------------|---|
| Target: | ITCH |
| Reactivity: | Human, Mouse |
| Host: | Rabbit |
| Clonality: | Polyclonal |
| Tested Applications: | ELISA, WB |
| Recommended dilutions: | WB: 1/500 - 1/3000, ELISA: 1/40000. Optimal dilutions/concentrations should be determined by the end user. |
| Immunogen: | The antiserum was produced against synthesized non-phosphopeptide derived from human ITCH around the phosphorylation site of tyrosine 420 (F-I-YP-G-N). |
| Purification: | Purified from rabbit antiserum by affinity chromatography using epitope-specific immunogen. |
| Form: | Liquid |
| Isotype: | IgG |
| Conjugation: | Unconjugated |
| Storage: | Aliquot and store at -20 °C. Avoid repeated freeze/thaw cycles. |
| Swiss Prot: | Q96J02 |
| Enzyme Commission Number: | EC 6.3.2.- |
| Buffer: | PBS (without Mg ²⁺ and Ca ²⁺), pH 7.4, 150 mM NaCl, 0.02% sodium azide, 50% glycerol. |

Note: This product is for research use only.