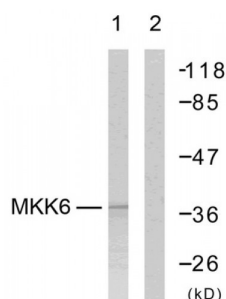


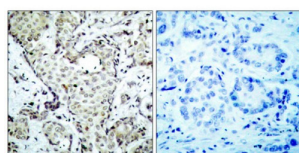
Abbexa Ltd, Innovation Centre, Cambridge Science Park, Cambridge, CB4 0EY, UK
Telephone: +44 (0) 1223 755950 - Fax: +44 (0) 1223 755951 - E-Mail: info@abbexa.com

Dual Specificity Mitogen-Activated Protein Kinase Kinase 3 (MKK3) Antibody

Catalogue No.:abx012869



Western blot analysis using MKK6 (epitope around residue 207) Antibody (abx012869). Line1: The extracts from MDA-MB-435 cells; Line2: The extracts from MDA-MB-435 cells using abx012869 preincubated with synthesized peptide.



Immunohistochemical analysis of paraffin-embedded breast carcinoma, using MKK6 (epitope around residue 207) Antibody (abx012869). Left: Untreated; Right: Treated with synthesized peptide.

Rabbit polyclonal antibody against MKK3 protein. Immunogen region is Internal.

Target: MKK3

Reactivity: Human, Mouse, Rat

Host: Rabbit

Clonality: Polyclonal

Tested Applications: ELISA, WB, IHC

Recommended dilutions: WB: 1/500 - 1/3000, IHC: 1/50 - 1/100, ELISA: 1/5000. Optimal dilutions/concentrations should be determined by the end user.

Immunogen: The antiserum was produced against synthesized non-phosphopeptide derived from human MKK6 around the phosphorylation site of Serine207.

Purification: Purified from rabbit antiserum by affinity chromatography using epitope-specific immunogen.

Form: Liquid

Isotype: IgG

Abbexa Ltd, Innovation Centre, Cambridge Science Park, Cambridge, CB4 0EY, UK
Telephone: +44 (0) 1223 755950 - Fax: +44 (0) 1223 755951 - E-Mail: info@abbexa.com

Conjugation: Unconjugated

Storage: Aliquot and store at -20 °C. Avoid repeated freeze/thaw cycles.

Swiss Prot: [P46734](#)

Buffer: PBS (without Mg^{2+} and Ca^{2+}), pH 7.4, 150 mM NaCl, 0.02% sodium azide, 50% glycerol.

Note: This product is for research use only.